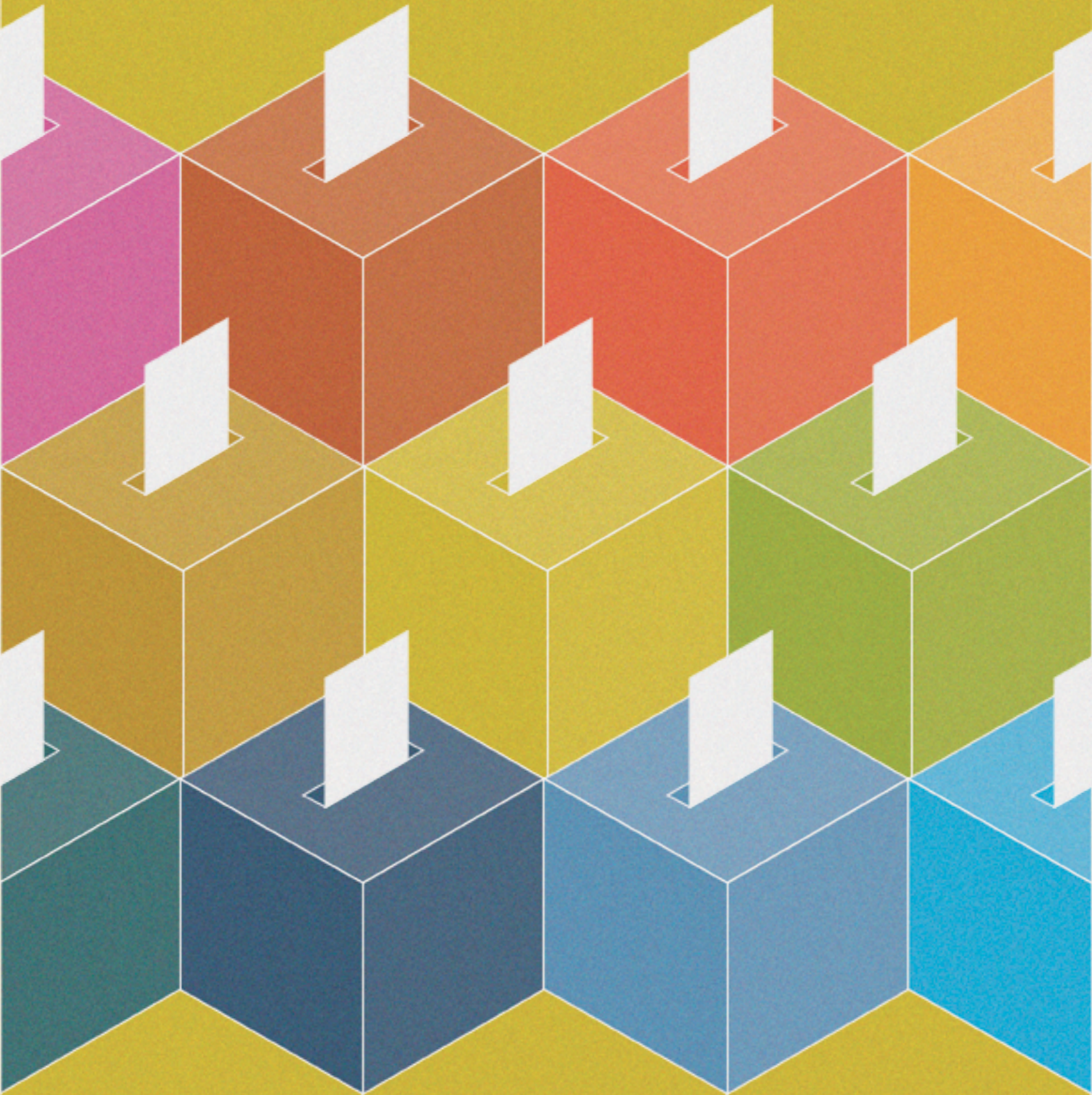


Results of the 2022 Local and Primary Elections

BOND AND TAX MEASURES APPEARING ON THE 2022 LOCAL AND PRIMARY BALLOTS



CALIFORNIA DEBT AND INVESTMENT ADVISORY COMMISSION

For over forty years, the California Debt and Investment Advisory Commission (CDIAC) has provided information, education, and technical assistance on debt issuance and public funds investments to local public agencies and other public finance professionals. CDIAC was created in 1981 to serve as the state's clearinghouse for public debt issuance information and to assist state and local agencies with the monitoring, issuance, and management of public debt.

COMMISSION MEMBERS

FIONA MA, CPA
California State Treasurer and Chair

GAVIN NEWSOM
Governor

BETTY T. YEE
State Controller

SABRINA CERVANTES
Assemblymember

COTTIE PETRIE-NORRIS
Assemblymember

PATRICIA BATES
Senator

STEVEN BRADFORD
Senator

SANDIE ARNOTT
Treasurer-Tax Collector, County of San Mateo

EXECUTIVE DIRECTOR

ROBERT BERRY

Additional information concerning this report or CDIAC programs may be obtained by contacting CDIAC directly via phone (916) 653-3269, fax (916) 654-7440, e-mail (cdiac@treasurer.ca.gov) or by visiting CDIAC's website: www.treasurer.ca.gov/cdiac.

All rights reserved. No part of *Results of the 2022 Local and Primary Elections: Bond and Tax Measures Appearing on the 2022 Local and Primary Ballots* may be reproduced without written credit given to CDIAC. Permission to reprint with written credit given to CDIAC is hereby granted.

Contents

- INTRODUCTION 1
- 2022 LOCAL AND PRIMARY ELECTION RESULTS 2
 - SUMMARY 2
 - GENERAL OBLIGATION BOND MEASURES 3
 - TAX MEASURES 3
 - RESULTS BY REGION 5
- COMPARISON OF THE 2020 AND 2022 PRIMARY ELECTIONS 6
 - SUMMARY 8
- FIGURES
 - FIGURE 1: Measure Type and Threshold 1
 - FIGURE 2: Summary of Results for Fiscal Measures by Type,
Results of the 2022 Local and Primary Elections 2
 - FIGURE 3: GO Bond Measures by Number and Authorized Volume,
Results of the 2022 Local and Primary Elections 3
 - FIGURE 4: GO Bond Measures by Purpose, Results of the 2022 Local and Primary Elections 3
 - FIGURE 5: Tax Measures, Results of the 2022 Local and Primary Elections 4
 - FIGURE 6: Tax Measures by Purpose, Results of the 2022 Local and Primary Elections 4
 - FIGURE 7: Counties Included in Region 5
 - FIGURE 8: Election Results by Region, Results of the 2022 Local and Primary Elections. 5
 - FIGURE 9: Election Results by Vote Requirement, 2020 and 2022 Primary Elections 6

FIGURE 10: Election Results by Type of Measure, 2020 and 2022 Primary Elections7

FIGURE 11: Local Election Results by Region, 2020 and 2022 Primary Elections7

FIGURE 12: Election Results by Purpose, 2020 and 2022 Primary Elections.8

APPENDICES

APPENDIX A: Summary of Local Government Bond and Tax Measures,
by County, 2022 Local and Primary Elections9

APPENDIX B: Summary of Local Government Bond and Tax Measures,
by Region, 2022 Local and Primary Elections17

APPENDIX C: Summary of Local Government Bond and Tax Measures,
by Type of Tax, 2022 Local and Primary Elections27

APPENDIX D: Summary of Local Government Bond and Tax Measures,
by Purpose, 2022 Local and Primary Elections37

Acknowledgement

Jean Shih of the Research and Policy Analysis Unit compiled the data and prepared the analysis. Angelica Hernandez reviewed and edited the report.

Introduction

Constitutional and statutory provisions require voters to authorize general obligation (GO) bonds issued by state and local governments. For bonds issued by the State, the authorization must be made through a statewide election. Local bonds must be approved by voters within the jurisdiction authorizing the bond. State and local governments must also seek voter approval for levies of certain revenue exactions and taxes. For both state and local measures, the voter approval threshold depends on the type and purpose of the bond or tax (see Figure 1).

After each statewide election, the California Debt and Investment Advisory Commission (CDIAC) publishes a statistical summary and review of bond and tax measures appearing on state and local ballots. This report, the 39th in the series, summarizes the results of bond and tax measures on the June 7, 2022 Primary Election ballot as well as local elections that occurred on April 12, 2022 and May 3, 2022. This report also contains appendices which summarize the measures by county, region, type of tax and purpose.

FIGURE 1
MEASURE TYPE AND THRESHOLD

BALLOT MEASURE	REQUIREMENT FOR PASSAGE
Local GO – Education (Prop. 39 limits)	55 percent
Local GO – Education (without Prop. 39 limits)	Two-thirds
Local GO – Non-education	Two-thirds
Local Special Tax	Two-thirds
Local General Tax	Majority
State Bond and Tax	Majority

2022 Local and Primary Election Results

SUMMARY

- **TOTAL MEASURES.** Voters considered 72 local fiscal measures: 48 tax measures and 24 general obligation bond measures. There were no state-wide measures.
- **APPROVED MEASURES.** Of the 72 measures on both the primary and local election ballots, voters approved 52 measures (72.2%). (Figure 2)
- **PASSAGE RATES.** The four tax measures presented to voters in local elections all passed. In the primary election, special tax measures received the greatest support from voters with a 79.4% approval rate. (Figure 2)

FIGURE 2

SUMMARY OF RESULTS FOR FISCAL MEASURES BY TYPE
RESULTS OF THE 2022 LOCAL AND PRIMARY ELECTIONS

FISCAL MEASURE TYPE	TOTAL NUMBER	PASSED	PASSAGE RATE
LOCAL ELECTION			
General Tax	1	1	100.0%
Special Tax	3	3	100.0
PRIMARY ELECTION			
General Tax	10	5	50.0 %
GO Bond ¹	24	16	66.7
Special Tax ²	34	27	79.4
TOTAL	72	52	72.2%

¹ Includes five local bond measures that required two-thirds voter approval.

² Includes three special tax measure, which required majority voter approval.

GENERAL OBLIGATION BOND MEASURES

- **POSITIVE SUPPORT FOR GO BOND MEASURES.** Voters approved 66.7% of these measures. (Figure 3)
- **VOLUME OF APPROVED MEASURES.** Voters approved approximately \$1.6 billion in GO bond measures. (Figure 3)
- **K-12 EDUCATIONAL FOCUS.** By purpose K-12 School Facilities represented 87.5% of all GO bond measures. (Figure 4)

- **STRONG SUPPORT FOR GO BONDS FOR K-12 SCHOOL FACILITIES AND WATER TREATMENT.** Voters approved 71.4% of GO bond measures for K-12 School Facilities and approved the only GO bond measure for Water Treatment. (Figure 4)
- **NO SUPPORT FOR HOSPITAL/HEALTH CARE FACILITIES OR PUBLIC TRANSIT GO BONDS.** Voters did not approve the GO bond measures for Hospital/Health Care Facilities or Public Transit. (Figure 4)

FIGURE 3

GO BOND MEASURES BY NUMBER AND AUTHORIZED VOLUME (IN MILLIONS)* RESULTS OF THE 2022 LOCAL AND PRIMARY ELECTIONS

RESULT	NUMBER	VOLUME	PERCENT OF GO BOND MEASURES (BY NUMBER)
Pass ¹	16	\$1,556	66.7%
Fail ²	8	1,038	33.3
TOTAL	24	\$2,594	100.0%

¹ Includes one local bond measure that required two-thirds voter approval.

² Includes four local bond measures that required two-thirds voter approval.

TAX MEASURES

- **GOOD SUPPORT FOR TAX MEASURES.** For both the local and primary elections, voters approved 75.0% of general and special tax measures. (Figure 5)
- **TEPID SUPPORT IN PRIMARY ELECTION FOR GENERAL TAX MEASURES.** General tax measures had a passage rate of 50.0% for the primary election. (Figure 5)
- **MAJORITY VS. TWO-THIRDS VOTING REQUIREMENT.** General tax measures only need a majority of the vote to pass. If these measures had a two-thirds voting requirement, only 27.3% (3

FIGURE 4

GO BOND MEASURES BY PURPOSE RESULTS OF THE 2022 LOCAL AND PRIMARY ELECTIONS

PURPOSE ¹	TOTAL PROPOSED MEASURES		PASSED MEASURES	
	NUMBER	PERCENT OF MEASURES	NUMBER	PASSAGE RATE
K-12 School Facilities	21	87.5%	15	71.4%
Hospital/Health Care Facilities	1	4.2	0	0.0
Public Transit	1	4.2	0	0.0
Water Treatment	1	4.2	1	100.0
TOTAL	24	100.0%	16	66.7%

¹ Each purpose category includes one local bond measure that required two-thirds voter approval, except K-12 School Facilities, which includes two.

FIGURE 5

**TAX MEASURES
RESULTS OF THE 2022 LOCAL AND PRIMARY ELECTIONS**

TYPE OF TAX	TOTAL NUMBER	PERCENT OF MEASURES	PASSED	PASSAGE RATE
LOCAL ELECTION				
General Tax	1	2.1%	1	100.0%
Special Tax	3	6.3	3	100.0
PRIMARY ELECTION				
General Tax	10	20.8%	5	50.0%
Special Tax	34	70.8	27	79.4
TOTAL	48	100.0%	36	75.0%

FIGURE 6

**TAX MEASURES BY PURPOSE
RESULTS OF THE 2022 LOCAL AND PRIMARY ELECTIONS**

PURPOSE	TOTAL NUMBER	PERCENT OF MEASURES	PASSED	PASSAGE RATE
LOCAL ELECTION				
Capital Improvements	1	2.1%	1	100.0%
Education	1	2.1	1	100.0
General Government	1	2.1	1	100.0
Public Health and Safety	1	2.1	1	100.0
PRIMARY ELECTION				
Capital Improvements	4	8.3%	1	25.0%
Education	8	16.7	7	87.5
General Government	8	16.7	5	62.5
Miscellaneous	10	20.8	9	90.0
Public Health and Safety	14	29.2	10	71.4
TOTAL	48	100.0%	36	75.0%

of 11) would have passed. In contrast, special tax measures (37), require two-thirds voter approval. These measures had strong support with an 81.1% passage rate. If these measures only required a majority vote, 97.3% of the measures (36 of 37) would have passed. (Figure 5)

- **TAX MEASURES BY PURPOSE.** A majority of the tax measures appearing on the local and

primary ballots were special taxes for public health and safety. The remaining measures were for capital improvements, education, general government, and miscellaneous. Miscellaneous purposes include public libraries, park and recreation facilities, disposal of abandoned vehicles, zoo maintenance, and various city services. (Figure 6)

FIGURE 7

COUNTIES INCLUDED IN REGION

BAY AREA	Alameda, Contra Costa, Marin, Napa, San Francisco, San Mateo, Santa Clara, Solano, and Sonoma Counties.
CENTRAL VALLEY	Butte, Colusa, El Dorado, Fresno, Glenn, Kern, Kings, Madera, Merced, Placer, Sacramento, San Joaquin, Shasta, Sutter, Stanislaus, Tehama, Tulare, Yolo, and Yuba Counties.
LOS ANGELES	Los Angeles, Orange, and Ventura Counties.
SAN DIEGO/ INLAND EMPIRE	Imperial, San Diego, Riverside, and San Bernardino Counties.
OTHER	Alpine, Amador, Calaveras, Del Norte, Humboldt, Inyo, Lake, Lassen, Mariposa, Mendocino, Modoc, Mono, Monterey, Nevada, Plumas, San Benito, San Luis Obispo, Santa Barbara, Santa Cruz, Sierra, Siskiyou, Trinity, and Tuolumne Counties. Also includes measures that overlap multiple county boundaries.

RESULTS BY REGION

The election results are divided into five regions: Bay Area, Central Valley, Los Angeles, San Diego/Inland Empire, and Other. (Figure 7)

- **APPROVED MEASURES.** Bay Area region voters were presented with the most measures (31). Voters in multiple regions were presented with the lowest number of measures (two).
- **PASSAGE RATES.** The Bay Area region had the highest passage rate for GO bond and tax measures (90.3%). Measures in the Los Angeles region had the lowest passage rate (28.6%).

Figure 8 shows the number and percentage of measures that were approved by region.

FIGURE 8

ELECTION RESULTS BY REGION RESULTS OF THE 2022 LOCAL AND PRIMARY ELECTIONS

REGION	TOTAL PROPOSED	PASSED	PASSAGE RATE
LOCAL ELECTION			
Bay Area	2	2	100.0%
Other	2	2	100.0
PRIMARY ELECTION			
Bay Area	29	26	89.7%
Central Valley	13	7	53.8
Los Angeles	7	2	28.6
San Diego/Inland Empire	5	3	60.0
Other	12	9	75.0
Multiple ¹	2	1	50.0
TOTAL	72	52	72.2%

¹ Multiple includes regions with measures that overlap multiple county boundaries.

Comparison of the 2020 and 2022 Primary Elections

- **COMPARATIVE PASSAGE RATES.** The passage rate of bond and tax measures during the 2022 Primary Election was significantly higher (70.6%), than the 2020 Primary Election (38.6%). (Figure 9)
- **COMPARATIVE NUMBER OF APPROVED MEASURES.** While the number of approved measures in 2022 (48), was lower than 2020 (93), there were substantially less measures in 2022 which resulted in a much higher overall voter approval rate. (Figure 9)
- **SPECIAL TAX MEASURE PASSAGE RATES.** The passage rate for special tax measures more than doubled in 2022 (79.4%) compared to 2020 (33.8%). (Figure 10)
- **GO BOND MEASURE PASSAGE RATES.** The passage rate for GO bond measures almost doubled in 2022 (66.7%) compared to 2020 (34.6%). (Figure 10)
- **REGIONAL PASSAGE RATES.** In both 2022 and 2020, the Bay Area region had the highest pas-

Figure 9 provides a summary of the passage requirements for the bond and tax measures appearing on the 2020 Primary Election and the 2022 Primary Election ballots.

FIGURE 9

ELECTION RESULTS BY VOTE REQUIREMENT, 2020 AND 2022 PRIMARY ELECTIONS

VOTE REQUIREMENT	2020			2022		
	TOTAL PROPOSED	PASSED	PASSAGE RATE	TOTAL PROPOSED	PASSED	PASSAGE RATE
Majority	44	26	59.1%	13	8	61.5%
55%	122	42	34.4	19	15	78.9
Two-thirds	75	25	33.3	36	25	69.4
TOTAL	241	93	38.6%	68	48	70.6%

Figure 10 provides a summary of the types of bond and tax measures on the Primary Election ballots.

FIGURE 10

ELECTION RESULTS BY TYPE OF MEASURE, 2020 AND 2022 PRIMARY ELECTIONS

MEASURE TYPE	2020			2022		
	TOTAL PROPOSED	PASSED	PASSAGE RATE	TOTAL PROPOSED	PASSED	PASSAGE RATE
STATE						
GO Bond	1	0	0.0%	0	0	N/A
LOCAL						
GO Bond	127	44	34.6%	24	16	66.7%
General Tax	42	25	59.5	10	5	50.0
Special Tax ¹	71	24	33.8	34	27	79.4
TOTAL	241	93	38.6%	68	48	70.6%

¹ Includes three special tax measures in 2022 that required majority voter approval instead of two-thirds.

Figure 11 provides a summary of votes by region on the Primary Election ballots.

FIGURE 11

LOCAL ELECTION RESULTS BY REGION, 2020 AND 2022 PRIMARY ELECTIONS

REGION	2020			2022		
	TOTAL PROPOSED ¹	PASSED	PASSAGE RATE	TOTAL PROPOSED	PASSED	PASSAGE RATE
Bay Area	62	37	59.7%	29	26	89.7%
Central Valley	59	10	16.9	13	7	53.8
Los Angeles	50	21	42.0	7	2	28.6
San Diego/Inland Empire	24	4	16.7	5	3	60.0
Other	40	21	52.5	12	9	75.0
Multiple ²	5	0	0.0	2	1	50.0
TOTAL	240	93	38.8%	68	48	70.6%

¹ Total does not include the one state measure on the ballot in 2020.

² Multiple includes regions with measures that overlap multiple county boundaries.

sage rate at 89.7% and 59.7%, respectively. (Figure 11)

- **PASSAGE RATES BY PURPOSE.** Miscellaneous and education had the highest passage rates, 90.0% and 80.0%, respectively, in the 2022 Primary Election. In 2020, the passage rate for general government and education were the highest at 59.1% and 37.1%, respectively. (Figure 12)
- **COMPARATIVE NUMBER OF PROPOSED LOCAL MEASURES.** In both Primary Elections, education had the highest number of measures, with 151 or 62.7% of all measures in 2020 and 25 or 39.7% of all measures in 2022. (Figure 12)
- **GENERAL GOVERNMENT MEASURE PASSAGE RATES.** General government measures had a marginally higher passage rate of 59.1% in 2020 compared to 57.1% in 2022. (Figure 12)

SUMMARY

Voters generally supported bond and tax measures in the 2022 Primary Election with a 70.6% approval rate, a substantial increase over the 2020 Primary Election (38.6%). This increase in the 2022 Primary Election is attributed to the overall number of ballot measures, which declined significantly (71.8%) in 2022. In both elections, education measures comprised the majority of the ballot measures: 62.7% in 2020 and 42.6% in 2022. When comparing passage rates for education measures, there was a low rate of passage in 2020 (37.1%), while 2022 had a significant increase in support (75.9%). Additionally, other purpose categories, including capital improvements, public health and safety, and miscellaneous also experienced significant increases in voter support in the 2022 Primary Election. While voters approved one cannabis measure in the 2020 Primary Election, only one cannabis measure was presented to voters in the 2022 Primary Election and it failed.

Figure 12 summarizes the types of projects appearing on the Primary Election ballots.

FIGURE 12

ELECTION RESULTS BY PURPOSE, 2020 AND 2022 PRIMARY ELECTIONS

PURPOSE	2020			2022		
	TOTAL PROPOSED	PASSED	PASSAGE RATE	TOTAL PROPOSED	PASSED	PASSAGE RATE
Education	151	56	37.1%	29	22	75.9%
General Government	44	26	59.1	8	5	62.5
Capital Improvements	7	1	14.3	6	2	33.3
Public Health and Safety	30	7	23.3	15	10	66.7
Miscellaneous ¹	9	3	33.3	10	9	90.0
TOTAL	241	93	38.6%	68	48	70.6%

¹ In 2020, this category includes park and recreation facilities, small business programs, housing programs, and arts and culture programs and facilities. In 2022, this category includes public libraries, park and recreation facilities, disposal of abandoned vehicle, zoo maintenance, and various city services.

Appendix A: Summary of Local Government Bond and Tax Measures by County

TABLE A

SUMMARY OF LOCAL GOVERNMENT BOND AND TAX MEASURES BY COUNTY, 2022 LOCAL AND PRIMARY ELECTIONS

COUNTY	REGION	AGENCY	TYPE OF TAX/DEBT	AMOUNT OF BOND/TAX	PURPOSE	MEASURE	% YES	% NO	RESULT	THRESHOLD	ELECTION DATE
LOCAL											
Alameda / Contra Costa	Bay Area	Livermore Valley Joint Unified School District	Special Tax	Parcel Tax: extend the existing \$138 parcel tax for seven years, from July 1, 2022, to July 1, 2029, providing approximately \$4,000,000 annually	K-12 School Programs	A	67.24	32.76	Pass	Two-thirds	5/3/2022
Marin	Bay Area	Paradise Ranch Estates Permanent Road Division	Special Tax	Parcel Tax: \$968 per parcel for 10 years, and then \$125 per parcel for the following 15 years	Street Improvements	R	90.15	9.85	Pass	Two-thirds	4/12/2022
Monterey	Other	Pacific Grove	General Tax	Sales Tax: increase from 1% to 1.5% transactions and use tax, generating an estimated \$1.1 million annually	General Government	A	60.05	39.95	Pass	Majority	4/12/2022
Plumas	Other	Peninsula Fire Protection District	Special Tax	Parcel Tax: \$442.50 (Improved) \$394.50 (unimproved) per year per parcel, replacing the current special tax of \$292.50 (Improved) \$277.50 (unimproved) per year per parcel	Fire Protection/ Emergency Medical Services	A	74.67	25.33	Pass	Two-thirds	5/3/2022
PRIMARY ELECTION											
Alameda	Bay Area	Alameda Unified School District	GO Bond	\$298,000,000	K-12 School Facilities	B	56.33	43.67	Pass	55%	6/7/2022
Alameda	Bay Area	Oakland	Special Tax	Parcel Tax: \$114.50 per parcel for single-family residential units, \$78.22 per parcel for multi-unit residential property, and \$58.65 for non-residential units, thereby generating an estimated \$18 million per year	Public Libraries Services	C	82.36	17.64	Pass	Two-thirds	6/7/2022
Contra Costa	Bay Area	Contra Costa County	Special Tax	Abandoned Vehicle Abatement Fee: extend the \$1 annual fee per vehicle and an additional \$2 for certain commercial vehicles, estimated to generate \$1,100,000 annually, until April 30, 2032	Removal/Disposal of Abandoned/ Wrecked Vehicles	G	67.38	32.62	Pass	Two-thirds	6/7/2022

TABLE A

SUMMARY OF LOCAL GOVERNMENT BOND AND TAX MEASURES BY COUNTY, 2022 LOCAL AND PRIMARY ELECTIONS

COUNTY	REGION	AGENCY	TYPE OF TAX/DEBT	AMOUNT OF BOND/TAX	PURPOSE	MEASURE	% YES	% NO	RESULT	THRESHOLD	ELECTION DATE
Contra Costa	Bay Area	Martinez	Special Tax	Parcel Tax: \$79 annually for single-family parcels and at specified maximum rates for other parcel types, for 30 years, providing approximately \$1.2 million annually	Park and Recreation Facilities	F	68.77	31.23	Pass	Two-thirds	6/7/2022
El Dorado	Central Valley	Cascade Drainage Zone of Benefit 98393	Special Tax	Parcel Tax: \$350.00 on each parcel of real property within the boundaries of the Zone for 19 years, generating an annual revenue of \$12,950 each fiscal year	Street/Storm Drain Improvements	E	0	100	Fail	Two-thirds	6/7/2022
El Dorado	Central Valley	Fallen Leaf Lake Community Services District	Special Tax	Parcel Tax: \$660 per unit, subject to maximum inflation adjustment of 1.5% per year, established as: Unimproved 0.5 unit (currently \$320.46); improved 1.0 unit (currently \$640.94); SSA Sierra Programs LLC (40 units), annual revenue raised of \$205,416.40, for the next four years	Fire Services/ Emergency Medical Services	A	80.95	19.05	Pass	Two-thirds	6/7/2022
El Dorado	Central Valley	Knolls Property Owners Community Services District	Special Tax	Parcel Tax: \$300.00 per year to a maximum of \$600.00 per parcel per year (+CPI)	Street Improvements	B	55.56	44.44	Fail	Two-thirds	6/7/2022
El Dorado	Central Valley	Sundance Trail Zone of Benefit 98109	Special Tax	Parcel Tax: \$600 per parcel per year, adjusted each fiscal year by an amount not to exceed the cost of living using the California Construction Cost Index, up to a maximum rate of \$1,000 per parcel per year, commencing fiscal year 2023-2024	Street Improvements	C	73.21	26.79	Pass	Two-thirds	6/7/2022
Fresno	Central Valley	Fresno	Special Tax	Sales Tax: 1/10th of 1% sales tax for 15 years, providing approximately \$15,000,000 annually	Zoo Maintenance	Z	82.38	17.62	Pass	Two-thirds	6/7/2022
Fresno	Central Valley	Westside Elementary School District	GO Bond	\$4,500,000	K-12 School Facilities	A	92.86	7.14	Pass	55%	6/7/2022
Humboldt	Other	Humboldt County	Special Tax	Transient Occupancy Tax: 12% generating approximately \$3,080,000 annually	General Government	J	63.9	36.1	Pass	Majority	6/7/2022

TABLE A

SUMMARY OF LOCAL GOVERNMENT BOND AND TAX MEASURES BY COUNTY, 2022 LOCAL AND PRIMARY ELECTIONS

COUNTY	REGION	AGENCY	TYPE OF TAX/DEBT	AMOUNT OF BOND/TAX	PURPOSE	MEASURE	% YES	% NO	RESULT	THRESHOLD	ELECTION DATE
Humboldt	Other	Humboldt County	Special Tax	Abandoned Vehicle Abatement Fee: \$1 per vehicle and \$2 for certain commercial vehicles be adopted for ten years, generating \$160,000 annually	Removal/Disposal of Abandoned/Wrecked Vehicles	K	80.32	19.68	Pass	Two-thirds	6/7/2022
Imperial	San Diego/ Inland Empire	El Centro Elementary School District	GO Bond	\$37,800,000	K-12 School Programs/ Facilities	Y	56.72	43.28	Fail	Two-thirds	6/7/2022
Imperial	San Diego/ Inland Empire	Imperial Unified School District	GO Bond	\$50,000,000	K-12 School Facilities	A	50.41	49.59	Fail	55%	6/7/2022
Imperial	San Diego/ Inland Empire	Westmorland Union Elementary School District	GO Bond	\$3,750,000	K-12 School Facilities	W	56.09	43.91	Pass	55%	6/7/2022
Imperial	San Diego/ Inland Empire	Westmorland Union Elementary School District	GO Bond	\$3,750,000	K-12 School Facilities	Z	55.6	44.4	Pass	55%	6/7/2022
Kern / San Bernardino	Central Valley / San Diego/ Inland Empire	Muroc Joint Unified School District	GO Bond	\$21,000,000	K-12 School Facilities	B	60.81	39.19	Pass	55%	6/7/2022
Kern / San Bernardino	Central Valley / San Diego/ Inland Empire	Sierra Sands Unified School District	GO Bond	\$52,800,000	K-12 School Facilities	C	41.27	58.73	Fail	55%	6/7/2022
Kings	Central Valley	Kings County	General Tax	Sales Tax: additional 0.5%, from 0.25% to 0.75%, generating an estimated \$11,700,000 per year	Fire Services/ Emergency Medical Services	F	35.73	64.27	Fail	Majority	6/7/2022
Lassen	Other	Susanville	General Tax	Sales Tax: \$0.01 estimated to generate \$1,750,000 annually	General Government	P	54.7	45.3	Pass	Majority	6/7/2022
Los Angeles	Los Angeles	Antelope Valley Healthcare District	GO Bond	\$400,000,000	Hospital/Health Care Facilities	H	57.41	42.59	Fail	Two-thirds	6/7/2022
Los Angeles	Los Angeles	Avalon	General Tax	Sales Tax: additional 0.25%, from 10% to 10.25%, generating approximately \$250,000 annually	General Government	S	34.03	65.97	Fail	Majority	6/7/2022
Los Angeles	Los Angeles	Avalon	General Tax	Transient Occupancy Tax: increase from 12% to 13%, for 10 years, generating an estimated \$500,000 per year	General Government	TT	46.5	53.5	Fail	Majority	6/7/2022
Los Angeles	Los Angeles	Little Lake City School District	GO Bond	\$36,000,000	K-12 School Facilities	LL	62.13	37.87	Pass	55%	6/7/2022

TABLE A

SUMMARY OF LOCAL GOVERNMENT BOND AND TAX MEASURES BY COUNTY, 2022 LOCAL AND PRIMARY ELECTIONS

COUNTY	REGION	AGENCY	TYPE OF TAX/DEBT	AMOUNT OF BOND/TAX	PURPOSE	MEASURE	% YES	% NO	RESULT	THRESHOLD	ELECTION DATE
Los Angeles	Los Angeles	Manhattan Beach	General Tax	Parcel Tax: \$1,095 on each real property parcel, adjusted annually for inflation, for 12 years, generating \$11,000,000 to \$13,000,000 annually	K-12 School Programs	A	31.98	68.02	Fail	Majority	6/7/2022
Los Angeles	Los Angeles	Torrance	General Tax	Sales Tax: 0.5%, generating \$18,000,000 annually	General Government	SST	54.95	45.05	Pass	Majority	6/7/2022
Madera	Central Valley	Chowchilla Union High School District	GO Bond	\$25,100,000	K-12 School Facilities	S	57.72	42.28	Pass	55%	6/7/2022
Marin	Bay Area	Kentfield Fire Protection District	Special Tax	Parcel Tax: \$94.50 per residential living unit or 1,500 square feet of developed nonresidential property, adjusted up to \$3 per year, for 4 years, generating an estimated \$265,500 annually	Paramedic/ Emergency Medical Services	K	83.52	16.48	Pass	Two-thirds	6/7/2022
Marin	Bay Area	Larkspur	Special Tax	Parcel Tax: \$94.50 per residential living unit or 1,500 square feet of developed nonresidential property, adjusted up to \$3 per year, for 4 years, generating an estimated \$680,000 annually	Paramedic/ Emergency Medical Services	H	81.9	18.1	Pass	Two-thirds	6/7/2022
Marin	Bay Area	Larkspur-Corte Madera School District	Special Tax	Parcel Tax: \$910 per parcel for 10 years, generating \$4,000,000 annually	K-12 School Programs	E	77.27	22.73	Pass	Two-thirds	6/7/2022
Marin	Bay Area	Marin County	Special Tax	Sales Tax: renew \$.25 tax, keeping tax rate at 8%, for 9 years, generating \$14,000,000 annually	Park and Recreation Facilities	A	74.73	25.27	Pass	Two-thirds	6/7/2022
Marin	Bay Area	Mesa Park Firehouse Community Park Agency	Special Tax	Parcel Tax: \$75 per year per improved parcel for a period of 4 years, raising approximately \$40,000 annually	Park and Recreation Facilities	M	83.47	16.53	Pass	Two-thirds	6/7/2022
Marin	Bay Area	Mill Valley School District	GO Bond	\$194,000,000	K-12 School Facilities	G	68.39	31.61	Pass	55%	6/7/2022

TABLE A

SUMMARY OF LOCAL GOVERNMENT BOND AND TAX MEASURES BY COUNTY, 2022 LOCAL AND PRIMARY ELECTIONS

COUNTY	REGION	AGENCY	TYPE OF TAX/DEBT	AMOUNT OF BOND/TAX	PURPOSE	MEASURE	% YES	% NO	RESULT	THRESHOLD	ELECTION DATE
Marin	Bay Area	Ross	Special Tax	Parcel Tax: \$94.50 per residential living unit or 1,500 square feet of developed nonresidential property, adjusted up to \$3 per year, for 4 years, generating approximately \$93,000 annually	Paramedic/ Emergency Medical Services	I	87	13	Pass	Two-thirds	6/7/2022
Marin	Bay Area	San Anselmo	Special Tax	Parcel Tax: \$94.50 per residential living unit or 1,500 square feet of developed nonresidential property, adjusted up to \$3 per year, for 4 years, generating approximately \$560,000 annually	Paramedic/ Emergency Medical Services	J	81.38	18.62	Pass	Two-thirds	6/7/2022
Marin	Bay Area	San Rafael City Elementary School District	GO Bond	\$152,000,000	K-12 School Facilities	C	67.03	32.97	Pass	55%	6/7/2022
Marin	Bay Area	San Rafael City High School District	GO Bond	\$216,000,000	K-12 School Facilities	B	67.83	32.17	Pass	55%	6/7/2022
Marin	Bay Area	Sleepy Hollow Fire Protection District	Special Tax	Parcel Tax: \$94.50 in year one and increasing \$3 annually to a maximum of \$103.50 per taxable living unit, or per 1,500 square feet of structure in nonresidential use, for 4 years, generating approximately \$85,995.00 in year one	Paramedic/ Emergency Medical Services	L	87.02	12.98	Pass	Two-thirds	6/7/2022
Mariposa	Other	Mariposa County	Special Tax	Sales Tax: 1% transaction and use tax for 40 years	Hospital/Health Care Facilities	O	69.62	30.38	Pass	Majority	6/7/2022
Mendocino	Other	Anderson Valley Unified School District	GO Bond	\$13,000,000	K-12 School Facilities	M	71.36	28.64	Pass	55%	6/7/2022
Merced	Central Valley	Merced River School District	GO Bond	\$3,500,000	K-12 School Facilities	T	24.83	75.17	Fail	55%	6/7/2022
Monterey	Other	San Lucas Union School District	GO Bond	\$3,600,000	K-12 School Facilities	C	59.46	40.54	Fail	Two-thirds	6/7/2022
Napa	Bay Area	Napa County	Special Tax	Sales Tax: increase of \$0.25, from 7.75% to 8%, for 10 years, generating \$10,000,000 annually	Fire Protection	L	56.35	43.65	Fail	Two-thirds	6/7/2022

TABLE A

SUMMARY OF LOCAL GOVERNMENT BOND AND TAX MEASURES BY COUNTY, 2022 LOCAL AND PRIMARY ELECTIONS

COUNTY	REGION	AGENCY	TYPE OF TAX/DEBT	AMOUNT OF BOND/TAX	PURPOSE	MEASURE	% YES	% NO	RESULT	THRESHOLD	ELECTION DATE
Napa	Bay Area	St. Helena	GO Bond	\$19,150,000	Water Treatment	H	74.74	25.26	Pass	Two-thirds	6/7/2022
Nevada	Other	Truckee	Special Tax	Sales Tax: renew and increase to .5%, providing \$3,000,000 annually	Park and Recreation Facilities	U	79.56	20.44	Pass	Two-thirds	6/7/2022
Orange	Los Angeles	Huntington Beach	Special Tax	Cannabis Tax: 6% on the gross receipts of cannabis retailers and 1% on other cannabis businesses	Police Services/ Behavioral Health/Homeless Prevention	A	64.58	35.42	Fail	Two-thirds	6/7/2022
Placer	Central Valley	North Lake Tahoe	General Tax	Transient Occupancy Tax: renew 2%, providing \$4,000,000 annually	Various City Services	A	89.97	10.03	Pass	Majority	6/7/2022
Sacramento	Central Valley	River Delta Fire District	Special Tax	Parcel Tax: annual \$90 per residential unit, raising approximately \$130,000 per year	Fire Protection/ Emergency Medical Services	H	72.08	27.92	Pass	Two-thirds	6/7/2022
Sacramento	Central Valley	Sacramento	Special Tax	Vehicle Abatement Program Fee: \$1.00 per vehicle and an additional \$2.00 for certain commercial vehicles, for 10 years	Removal/Disposal of Abandoned/ Wrecked Vehicles	C	57.68	42.32	Fail	Two-thirds	6/7/2022
San Bernardino	San Diego/ Inland Empire	San Bernardino County Fire Protection District	Special Tax	Parcel Tax: repeal the special \$117 parcel tax associated with Fire Protection Services Zone Five	Fire Protection	Z	58.43	41.57	Pass	Majority	6/7/2022
San Francisco	Bay Area	San Francisco	GO Bond	\$400,000,000	Public Transit	A	65.11	34.89	Fail	Two-thirds	6/7/2022
San Luis Obispo	Other	Oceano Community Services District	Special Tax	Parcel Tax: annual \$180.00 per parcel, providing \$410,760 a year, subject to annual maximum increases capped at 2%	Fire Services/ Emergency Medical Services	A-22	57.75	42.25	Fail	Two-thirds	6/7/2022
San Mateo	Bay Area	Belmont-Redwood Shores School District	Special Tax	Parcel Tax: renew \$292 annual tax providing \$3,500,000 annually for ten years	K-12 School Programs	C	75.05	24.95	Pass	Two-thirds	6/7/2022
San Mateo	Bay Area	Brisbane School District	Special Tax	Parcel Tax: \$131 per year, for six years, commencing July 1, 2022, estimated at \$450,000 annually	K-12 School Teacher Recruitment	G	73.23	26.77	Pass	Two-thirds	6/7/2022
San Mateo	Bay Area	Hillsborough City School District	GO Bond	\$140,000,000	K-12 School Facilities	H	61.44	38.56	Pass	55%	6/7/2022
San Mateo	Bay Area	Jefferson Elementary School District	GO Bond	\$45,000,000	K-12 School Facilities	J	62.5	37.5	Pass	55%	6/7/2022

TABLE A

SUMMARY OF LOCAL GOVERNMENT BOND AND TAX MEASURES BY COUNTY, 2022 LOCAL AND PRIMARY ELECTIONS

COUNTY	REGION	AGENCY	TYPE OF TAX/DEBT	AMOUNT OF BOND/TAX	PURPOSE	MEASURE	% YES	% NO	RESULT	THRESHOLD	ELECTION DATE
San Mateo	Bay Area	Millbrae Elementary School District	GO Bond	\$90,000,000	K-12 School Facilities	E	53.58	46.42	Fail	55%	6/7/2022
San Mateo	Bay Area	Ravenswood City School District	GO Bond	\$110,000,000	K-12 School Facilities	I	71.87	28.13	Pass	55%	6/7/2022
Santa Clara	Bay Area	Alum Rock Union School District	Special Tax	Parcel Tax: renew \$214.10 for 7 years, adjusted annually, providing \$4,500,000 yearly	K-12 School Programs/ Teacher Recruitment	I	69.42	30.58	Pass	Two-thirds	6/7/2022
Santa Clara	Bay Area	Fremont Union High School District	GO Bond	\$275,000,000	K-12 School Facilities	G	55.71	44.29	Pass	55%	6/7/2022
Santa Clara	Bay Area	Milpitas Unified School District	Special Tax	Parcel Tax: renew annual \$84 for eight years, providing \$1,600,000 annually	K-12 School Programs	E	74.55	25.45	Pass	Two-thirds	6/7/2022
Santa Clara	Bay Area	Mount Pleasant School District	Special Tax	Parcel Tax: renew annual \$95 for seven years, raising \$480,000 annually	K-12 School Programs	H	68.54	31.46	Pass	Two-thirds	6/7/2022
Santa Cruz	Other	Santa Cruz	General Tax	Sales Tax: additional 0.5% generating an estimated \$6,000,000 per year	General Government	F	49.85	50.15	Fail	Majority	6/7/2022
Santa Cruz	Other	Santa Cruz County	General Tax	Transient Occupancy Tax: 12% for hotels/motels/inns, and to 14% for vacation rental properties, providing approximately \$2,300,000 annually	General Government	B	69.23	30.77	Pass	Majority	6/7/2022
Santa Cruz	Other	Santa Cruz County	General Tax	Single-Use Cup Tax: \$0.125, raising approximately \$700,000 annually	General Government	C	69.64	30.36	Pass	Majority	6/7/2022
Sonoma	Bay Area	Kenwood School District	Special Tax	Parcel Tax: renew annual \$52, raising approximately \$110,000 per year	K-12 School Programs/Teacher Recruitment	A	81.12	18.88	Pass	Two-thirds	6/7/2022
Tulare	Central Valley	Exeter Public Cemetery District	Special Tax	Parcel Tax: \$35.00 per parcel on each parcel of taxable real property within the district, beginning as of July 1, 2022	Cemetery Improvements	U	61.59	38.41	Fail	Two-thirds	6/7/2022
Tuolumne	Other	Tuolumne South County Ambulance Zone	Special Tax	Parcel Tax: annual \$90 per improved commercial parcel and \$90.00 per dwelling for residential parcels, providing \$340,650 annually, and expiring on June 30, 2028	Emergency Medical Services	W	77.91	22.09	Pass	Two-thirds	6/7/2022

Appendix B: Summary of Local Government Bond and Tax Measures by Region

TABLE B

SUMMARY OF LOCAL GOVERNMENT BOND AND TAX MEASURES BY REGION, 2022 LOCAL AND PRIMARY ELECTIONS

COUNTY	REGION	AGENCY	TYPE OF TAX/DEBT	AMOUNT OF BOND/TAX	PURPOSE	MEASURE	% YES	% NO	RESULT	THRESHOLD	ELECTION DATE
LOCAL ELECTION											
Alameda / Contra Costa	Bay Area	Livermore Valley Joint Unified School District	Special Tax	Parcel Tax: extend the existing \$138 parcel tax for seven years, from July 1, 2022, to July 1, 2029, providing approximately \$4,000,000 annually	K-12 School Programs	A	67.24	32.76	Pass	Two-thirds	5/3/2022
Marin	Bay Area	Paradise Ranch Estates Permanent Road Division	Special Tax	Parcel Tax: \$968 per parcel for 10 years, and then \$125 per parcel for the following 15 years	Street Improvements	R	90.15	9.85	Pass	Two-thirds	4/12/2022
Monterey	Other	Pacific Grove	General Tax	Sales Tax: increase from 1% to 1.5% transactions and use tax, generating an estimated \$1.1 million annually	General Government	A	60.05	39.95	Pass	Majority	4/12/2022
Plumas	Other	Peninsula Fire Protection District	Special Tax	Parcel Tax: \$442.50 (Improved) \$394.50 (unimproved) per year per parcel, replacing the current special tax of \$292.50 (Improved) \$277.50 (unimproved) per year per parcel	Fire Protection/ Emergency Medical Services	A	74.67	25.33	Pass	Two-thirds	5/3/2022
PRIMARY ELECTION											
Alameda	Bay Area	Alameda Unified School District	GO Bond	\$298,000,000	K-12 School Facilities	B	56.33	43.67	Pass	55%	6/7/2022
Alameda	Bay Area	Oakland	Special Tax	Parcel Tax: \$114.50 per parcel for single-family residential units, \$78.22 per parcel for multi-unit residential property, and \$58.65 for non-residential units, thereby generating an estimated \$18 million per year	Public Libraries Services	C	82.36	17.64	Pass	Two-thirds	6/7/2022

TABLE B

SUMMARY OF LOCAL GOVERNMENT BOND AND TAX MEASURES BY REGION, 2022 LOCAL AND PRIMARY ELECTIONS

COUNTY	REGION	AGENCY	TYPE OF TAX/DEBT	AMOUNT OF BOND/TAX	PURPOSE	MEASURE	% YES	% NO	RESULT	THRESHOLD	ELECTION DATE
Contra Costa	Bay Area	Contra Costa County	Special Tax	Abandoned Vehicle Abatement Fee: extend the \$1 annual fee per vehicle and an additional \$2 for certain commercial vehicles, estimated to generate \$1,100,000 annually, until April 30, 2032	Removal/Disposal of Abandoned/Wrecked Vehicles	G	67.38	32.62	Pass	Two-thirds	6/7/2022
Contra Costa	Bay Area	Martinez	Special Tax	Parcel Tax: \$79 annually for single-family parcels and at specified maximum rates for other parcel types, for 30 years, providing approximately \$1.2 million annually	Park and Recreation Facilities	F	68.77	31.23	Pass	Two-thirds	6/7/2022
Marin	Bay Area	Kentfield Fire Protection District	Special Tax	Parcel Tax: \$94.50 per residential living unit or 1,500 square feet of developed non-residential property, adjusted up to \$3 per year, for 4 years, generating an estimated \$265,500 annually	Paramedic/Emergency Medical Services	K	83.52	16.48	Pass	Two-thirds	6/7/2022
Marin	Bay Area	Larkspur	Special Tax	Parcel Tax: \$94.50 per residential living unit or 1,500 square feet of developed non-residential property, adjusted up to \$3 per year, for 4 years, generating an estimated \$680,000 annually	Paramedic/Emergency Medical Services	H	81.9	18.1	Pass	Two-thirds	6/7/2022
Marin	Bay Area	Larkspur-Corte Madera School District	Special Tax	Parcel Tax: \$910 per parcel for 10 years, generating \$4,000,000 annually	K-12 School Programs	E	77.27	22.73	Pass	Two-thirds	6/7/2022
Marin	Bay Area	Marin County	Special Tax	Sales Tax: renew \$.25 tax, keeping tax rate at 8%, for 9 years, generating \$14,000,000 annually	Park and Recreation Facilities	A	74.73	25.27	Pass	Two-thirds	6/7/2022

TABLE B

SUMMARY OF LOCAL GOVERNMENT BOND AND TAX MEASURES BY REGION, 2022 LOCAL AND PRIMARY ELECTIONS

COUNTY	REGION	AGENCY	TYPE OF TAX/DEBT	AMOUNT OF BOND/TAX	PURPOSE	MEASURE	% YES	% NO	RESULT	THRESHOLD	ELECTION DATE
Marin	Bay Area	Mesa Park Firehouse Community Park Agency	Special Tax	Parcel Tax: \$75 per year per improved parcel for a period of 4 years, raising approximately \$40,000 annually	Park and Recreation Facilities	M	83.47	16.53	Pass	Two-thirds	6/7/2022
Marin	Bay Area	Mill Valley School District	GO Bond	\$194,000,000	K-12 School Facilities	G	68.39	31.61	Pass	55%	6/7/2022
Marin	Bay Area	Ross	Special Tax	Parcel Tax: \$94.50 per residential living unit or 1,500 square feet of developed non-residential property, adjusted up to \$3 per year, for 4 years, generating approximately \$93,000 annually	Paramedic/Emergency Medical Services	I	87	13	Pass	Two-thirds	6/7/2022
Marin	Bay Area	San Anselmo	Special Tax	Parcel Tax: \$94.50 per residential living unit or 1,500 square feet of developed non-residential property, adjusted up to \$3 per year, for 4 years, generating approximately \$560,000 annually	Paramedic/Emergency Medical Services	J	81.38	18.62	Pass	Two-thirds	6/7/2022
Marin	Bay Area	San Rafael City Elementary School District	GO Bond	\$152,000,000	K-12 School Facilities	C	67.03	32.97	Pass	55%	6/7/2022
Marin	Bay Area	San Rafael City High School District	GO Bond	\$216,000,000	K-12 School Facilities	B	67.83	32.17	Pass	55%	6/7/2022
Marin	Bay Area	Sleepy Hollow Fire Protection District	Special Tax	Parcel Tax: \$94.50 in year one and increasing \$3 annually to a maximum of \$103.50 per taxable living unit, or per 1,500 square feet of structure in non-residential use, for 4 years, generating approximately \$85,995.00 in year one	Paramedic/Emergency Medical Services	L	87.02	12.98	Pass	Two-thirds	6/7/2022

TABLE B

SUMMARY OF LOCAL GOVERNMENT BOND AND TAX MEASURES BY REGION, 2022 LOCAL AND PRIMARY ELECTIONS

COUNTY	REGION	AGENCY	TYPE OF TAX/DEBT	AMOUNT OF BOND/TAX	PURPOSE	MEASURE	% YES	% NO	RESULT	THRESHOLD	ELECTION DATE
Napa	Bay Area	Napa County	Special Tax	Sales Tax: increase of \$0.25, from 7.75% to 8%, for 10 years, generating \$10,000,000 annually	Fire Protection	L	56.35	43.65	Fail	Two-thirds	6/7/2022
Napa	Bay Area	St. Helena	GO Bond	\$19,150,000	Water Treatment	H	74.74	25.26	Pass	Two-thirds	6/7/2022
San Francisco	Bay Area	San Francisco	GO Bond	\$400,000,000	Public Transit	A	65.11	34.89	Fail	Two-thirds	6/7/2022
San Mateo	Bay Area	Belmont-Redwood Shores School District	Special Tax	Parcel Tax: renew \$292 annual tax providing \$3,500,000 annually for ten years	K-12 School Programs	C	75.05	24.95	Pass	Two-thirds	6/7/2022
San Mateo	Bay Area	Brisbane School District	Special Tax	Parcel Tax: \$131 per year, for six years, commencing July 1, 2022, estimated at \$450,000 annually	K-12 School Teacher Recruitment	G	73.23	26.77	Pass	Two-thirds	6/7/2022
San Mateo	Bay Area	Hillsborough City School District	GO Bond	\$140,000,000	K-12 School Facilities	H	61.44	38.56	Pass	55%	6/7/2022
San Mateo	Bay Area	Jefferson Elementary School District	GO Bond	\$45,000,000	K-12 School Facilities	J	62.5	37.5	Pass	55%	6/7/2022
San Mateo	Bay Area	Millbrae Elementary School District	GO Bond	\$90,000,000	K-12 School Facilities	E	53.58	46.42	Fail	55%	6/7/2022
San Mateo	Bay Area	Ravenswood City School District	GO Bond	\$110,000,000	K-12 School Facilities	I	71.87	28.13	Pass	55%	6/7/2022
Santa Clara	Bay Area	Alum Rock Union School District	Special Tax	Parcel Tax: re-new \$214.10 for 7 years, adjusted annually, providing \$4,500,000 yearly	K-12 School Programs/Teacher Recruitment	I	69.42	30.58	Pass	Two-thirds	6/7/2022
Santa Clara	Bay Area	Fremont Union High School District	GO Bond	\$275,000,000	K-12 School Facilities	G	55.71	44.29	Pass	55%	6/7/2022
Santa Clara	Bay Area	Milpitas Unified School District	Special Tax	Parcel Tax: renew annual \$84 for eight years, providing \$1,600,000 annually	K-12 School Programs	E	74.55	25.45	Pass	Two-thirds	6/7/2022
Santa Clara	Bay Area	Mount Pleasant School District	Special Tax	Parcel Tax: renew annual \$95 for seven years, raising \$480,000 annually	K-12 School Programs	H	68.54	31.46	Pass	Two-thirds	6/7/2022

TABLE B

SUMMARY OF LOCAL GOVERNMENT BOND AND TAX MEASURES BY REGION, 2022 LOCAL AND PRIMARY ELECTIONS

COUNTY	REGION	AGENCY	TYPE OF TAX/DEBT	AMOUNT OF BOND/TAX	PURPOSE	MEASURE	% YES	% NO	RESULT	THRESHOLD	ELECTION DATE
Sonoma	Bay Area	Kenwood School District	Special Tax	Parcel Tax: renew annual \$52, raising approximately \$110,000 per year	K-12 School Programs/Teacher Recruitment	A	81.12	18.88	Pass	Two-thirds	6/7/2022
El Dorado	Central Valley	Cascade Drainage Zone of Benefit 98393	Special Tax	Parcel Tax: \$350.00 on each parcel of real property within the boundaries of the Zone for 19 years, generating an annual revenue of \$12,950 each fiscal year	Street/Storm Drain Improvements	E	0	100	Fail	Two-thirds	6/7/2022
El Dorado	Central Valley	Fallen Leaf Lake Community Services District	Special Tax	Parcel Tax: \$660 per unit, subject to maximum inflation adjustment of 1.5% per year, established as: Unimproved 0.5 unit (currently \$320.46); improved 1.0 unit (currently \$640.94); SSA Sierra Programs LLC (40 units), annual revenue raised of \$205,416.40, for the next four years	Fire Services/ Emergency Medical Services	A	80.95	19.05	Pass	Two-thirds	6/7/2022
El Dorado	Central Valley	Knolls Property Owners Community Services District	Special Tax	Parcel Tax: \$300.00 per year to a maximum of \$600.00 per parcel per year (+CPI)	Street Improvements	B	55.56	44.44	Fail	Two-thirds	6/7/2022
El Dorado	Central Valley	Sundance Trail Zone of Benefit 98109	Special Tax	Parcel Tax: \$600 per parcel per year, adjusted each fiscal year by an amount not to exceed the cost of living using the California Construction Cost Index, up to a maximum rate of \$1,000 per parcel per year, commencing fiscal year 2023-2024	Street Improvements	C	73.21	26.79	Pass	Two-thirds	6/7/2022

TABLE B

SUMMARY OF LOCAL GOVERNMENT BOND AND TAX MEASURES BY REGION, 2022 LOCAL AND PRIMARY ELECTIONS

COUNTY	REGION	AGENCY	TYPE OF TAX/DEBT	AMOUNT OF BOND/TAX	PURPOSE	MEASURE	% YES	% NO	RESULT	THRESHOLD	ELECTION DATE
Fresno	Central Valley	Fresno	Special Tax	Sales Tax: 1/10th of 1% sales tax for 15 years, providing approximately \$15,000,000 annually	Zoo Maintenance	Z	82.38	17.62	Pass	Two-thirds	6/7/2022
Fresno	Central Valley	Westside Elementary School District	GO Bond	\$4,500,000	K-12 School Facilities	A	92.86	7.14	Pass	55%	6/7/2022
Kings	Central Valley	Kings County	General Tax	Sales Tax: additional 0.5%, from 0.25% to 0.75%, generating an estimated \$11,700,000 per year	Fire Services/ Emergency Medical Services	F	35.73	64.27	Fail	Majority	6/7/2022
Madera	Central Valley	Chowchilla Union High School District	GO Bond	\$25,100,000	K-12 School Facilities	S	57.72	42.28	Pass	55%	6/7/2022
Merced	Central Valley	Merced River School District	GO Bond	\$3,500,000	K-12 School Facilities	T	24.83	75.17	Fail	55%	6/7/2022
Placer	Central Valley	North Lake Tahoe	General Tax	Transient Occupancy Tax: renew 2%, providing \$4,000,000 annually	Various City Services	A	89.97	10.03	Pass	Majority	6/7/2022
Sacramento	Central Valley	River Delta Fire District	Special Tax	Parcel Tax: annual \$90 per residential unit, raising approximately \$130,000 per year	Fire Protection/ Emergency Medical Services	H	72.08	27.92	Pass	Two-thirds	6/7/2022
Sacramento	Central Valley	Sacramento	Special Tax	Vehicle Abatement Program Fee: \$1.00 per vehicle and an additional \$2.00 for certain commercial vehicles, for 10 years	Removal/Disposal of Abandoned/ Wrecked Vehicles	C	57.68	42.32	Fail	Two-thirds	6/7/2022
Tulare	Central Valley	Exeter Public Cemetery District	Special Tax	Parcel Tax: \$35.00 per parcel on each parcel of taxable real property within the district, beginning as of July 1, 2022	Cemetery Improvements	U	61.59	38.41	Fail	Two-thirds	6/7/2022
Kern / San Bernardino	Central Valley / San Diego/ Inland Empire	Muroc Joint Unified School District	GO Bond	\$21,000,000	K-12 School Facilities	B	60.81	39.19	Pass	55%	6/7/2022
Kern / San Bernardino	Central Valley / San Diego/ Inland Empire	Sierra Sands Unified School District	GO Bond	\$52,800,000	K-12 School Facilities	C	41.27	58.73	Fail	55%	6/7/2022

TABLE B

SUMMARY OF LOCAL GOVERNMENT BOND AND TAX MEASURES BY REGION, 2022 LOCAL AND PRIMARY ELECTIONS

COUNTY	REGION	AGENCY	TYPE OF TAX/DEBT	AMOUNT OF BOND/TAX	PURPOSE	MEASURE	% YES	% NO	RESULT	THRESHOLD	ELECTION DATE
Los Angeles	Los Angeles	Antelope Valley Healthcare District	GO Bond	\$400,000,000	Hospital/Health Care Facilities	H	57.41	42.59	Fail	Two-thirds	6/7/2022
Los Angeles	Los Angeles	Avalon	General Tax	Sales Tax: additional 0.25%, from 10% to 10.25%, generating approximately \$250,000 annually	General Government	S	34.03	65.97	Fail	Majority	6/7/2022
Los Angeles	Los Angeles	Avalon	General Tax	Transient Occupancy Tax: increase from 12% to 13%, for 10 years, generating an estimated \$500,000 per year	General Government	TT	46.5	53.5	Fail	Majority	6/7/2022
Los Angeles	Los Angeles	Little Lake City School District	GO Bond	\$36,000,000	K-12 School Facilities	LL	62.13	37.87	Pass	55%	6/7/2022
Los Angeles	Los Angeles	Manhattan Beach	General Tax	Parcel Tax: \$1,095 on each real property parcel, adjusted annually for inflation, for 12 years, generating \$11,000,000 to \$13,000,000 annually	K-12 School Programs	A	31.98	68.02	Fail	Majority	6/7/2022
Los Angeles	Los Angeles	Torrance	General Tax	Sales Tax: 0.5%, generating \$18,000,000 annually	General Government	SST	54.95	45.05	Pass	Majority	6/7/2022
Orange	Los Angeles	Huntington Beach	Special Tax	Cannabis Tax: 6% on the gross receipts of cannabis retailers and 1% on other cannabis businesses	Police Services/ Behavioral Health/Homeless Prevention	A	64.58	35.42	Fail	Two-thirds	6/7/2022
Humboldt	Other	Humboldt County	Special Tax	Transient Occupancy Tax: 12% generating approximately \$3,080,000 annually	General Government	J	63.9	36.1	Pass	Majority	6/7/2022
Humboldt	Other	Humboldt County	Special Tax	Abandoned Vehicle Abatement Fee: \$1 per vehicle and \$2 for certain commercial vehicles be adopted for ten years, generating \$160,000 annually	Removal/Disposal of Abandoned/ Wrecked Vehicles	K	80.32	19.68	Pass	Two-thirds	6/7/2022

TABLE B

SUMMARY OF LOCAL GOVERNMENT BOND AND TAX MEASURES BY REGION, 2022 LOCAL AND PRIMARY ELECTIONS

COUNTY	REGION	AGENCY	TYPE OF TAX/DEBT	AMOUNT OF BOND/TAX	PURPOSE	MEASURE	% YES	% NO	RESULT	THRESHOLD	ELECTION DATE
Lassen	Other	Susanville	General Tax	Sales Tax: \$0.01 estimated to generate \$1,750,000 annually	General Government	P	54.7	45.3	Pass	Majority	6/7/2022
Mariposa	Other	Mariposa County	Special Tax	Sales Tax: 1% transaction and use tax for 40 years	Hospital/Health Care Facilities	O	69.62	30.38	Pass	Majority	6/7/2022
Mendocino	Other	Anderson Valley Unified School District	GO Bond	\$13,000,000	K-12 School Facilities	M	71.36	28.64	Pass	55%	6/7/2022
Monterey	Other	San Lucas Union School District	GO Bond	\$3,600,000	K-12 School Facilities	C	59.46	40.54	Fail	Two-thirds	6/7/2022
Nevada	Other	Truckee	Special Tax	Sales Tax: renew and increase to .5%, providing \$3,000,000 annually	Park and Recreation Facilities	U	79.56	20.44	Pass	Two-thirds	6/7/2022
San Luis Obispo	Other	Oceano Community Services District	Special Tax	Parcel Tax: annual \$180.00 per parcel, providing \$410,760 a year, subject to annual maximum increases capped at 2%	Fire Services/ Emergency Medical Services	A-22	57.75	42.25	Fail	Two-thirds	6/7/2022
Santa Cruz	Other	Santa Cruz	General Tax	Sales Tax: additional 0.5% generating an estimated \$6,000,000 per year	General Government	F	49.85	50.15	Fail	Majority	6/7/2022
Santa Cruz	Other	Santa Cruz County	General Tax	Transient Occupancy Tax: 12% for hotels/motels/inns, and to 14% for vacation rental properties, providing approximately \$2,300,000 annually	General Government	B	69.23	30.77	Pass	Majority	6/7/2022
Santa Cruz	Other	Santa Cruz County	General Tax	Single-Use Cup Tax: \$0.125, raising approximately \$700,000 annually	General Government	C	69.64	30.36	Pass	Majority	6/7/2022

TABLE B

SUMMARY OF LOCAL GOVERNMENT BOND AND TAX MEASURES BY REGION, 2022 LOCAL AND PRIMARY ELECTIONS

COUNTY	REGION	AGENCY	TYPE OF TAX/DEBT	AMOUNT OF BOND/TAX	PURPOSE	MEASURE	% YES	% NO	RESULT	THRESHOLD	ELECTION DATE
Tuolumne	Other	Tuolumne South County Ambulance Zone	Special Tax	Parcel Tax: annual \$90 per improved commercial parcel and \$90.00 per dwelling for residential parcels, providing \$340,650 annually, and expiring on June 30, 2028	Emergency Medical Services	W	77.91	22.09	Pass	Two-thirds	6/7/2022
Imperial	San Diego/ Inland Empire	El Centro Elementary School District	GO Bond	\$37,800,000	K-12 School Programs/Facilities	Y	56.72	43.28	Fail	Two-thirds	6/7/2022
Imperial	San Diego/ Inland Empire	Imperial Unified School District	GO Bond	\$50,000,000	K-12 School Facilities	A	50.41	49.59	Fail	55%	6/7/2022
Imperial	San Diego/ Inland Empire	Westmorland Union Elementary School District	GO Bond	\$3,750,000	K-12 School Facilities	W	56.09	43.91	Pass	55%	6/7/2022
Imperial	San Diego/ Inland Empire	Westmorland Union Elementary School District	GO Bond	\$3,750,000	K-12 School Facilities	Z	55.6	44.4	Pass	55%	6/7/2022
San Bernardino	San Diego/ Inland Empire	San Bernardino County Fire Protection District	Special Tax	Parcel Tax: repeal the special \$117 parcel tax associated with Fire Protection Services Zone Five	Fire Protection	Z	58.43	41.57	Pass	Majority	6/7/2022

Appendix C: Summary of Local Government Bond and Tax Measures by Type of Tax

TABLE C

SUMMARY OF LOCAL GOVERNMENT BOND AND TAX MEASURES BY TYPE OF TAX, 2022 LOCAL AND PRIMARY ELECTIONS

COUNTY	REGION	AGENCY	TYPE OF AX/DEBT	AMOUNT OF BOND/TAX	PURPOSE	MEASURE	% YES	% NO	RESULT	THRESHOLD	ELECTION DATE
LOCAL ELECTION											
Monterey	Other	Pacific Grove	General Tax	Sales Tax: increase from 1% to 1.5% transactions and use tax, generating an estimated \$1.1 million annually	General Government	A	60.05	39.95	Pass	Majority	4/12/2022
Alameda / Contra Costa	Bay Area	Livermore Valley Joint Unified School District	Special Tax	Parcel Tax: extend the existing \$138 parcel tax for seven years, from July 1, 2022, to July 1, 2029, providing approximately \$4,000,000 annually	K-12 School Programs	A	67.24	32.76	Pass	Two-thirds	5/3/2022
Marin	Bay Area	Paradise Ranch Estates Permanent Road Division	Special Tax	Parcel Tax: \$968 per parcel for 10 years, and then \$125 per parcel for the following 15 years	Street Improvements	R	90.15	9.85	Pass	Two-thirds	4/12/2022
Plumas	Other	Peninsula Fire Protection District	Special Tax	Parcel Tax: \$442.50 (Improved) \$394.50 (unimproved) per year per parcel, replacing the current special tax of \$292.50 (Improved) \$277.50 (unimproved) per year per parcel	Fire Protection/ Emergency Medical Services	A	74.67	25.33	Pass	Two-thirds	5/3/2022
PRIMARY ELECTION											
Kings	Central Valley	Kings County	General Tax	Sales Tax: additional 0.5%, from 0.25% to 0.75%, generating an estimated \$11,700,000 per year	Fire Services/ Emergency Medical Services	F	35.73	64.27	Fail	Majority	6/7/2022
Lassen	Other	Susanville	General Tax	Sales Tax: \$0.01 estimated to generate \$1,750,000 annually	General Government	P	54.7	45.3	Pass	Majority	6/7/2022
Los Angeles	Los Angeles	Avalon	General Tax	Sales Tax: additional 0.25%, from 10% to 10.25%, generating approximately \$250,000 annually	General Government	S	34.03	65.97	Fail	Majority	6/7/2022

TABLE C

SUMMARY OF LOCAL GOVERNMENT BOND AND TAX MEASURES BY TYPE OF TAX, 2022 LOCAL AND PRIMARY ELECTIONS

COUNTY	REGION	AGENCY	TYPE OF AX/DEBT	AMOUNT OF BOND/TAX	PURPOSE	MEASURE	% YES	% NO	RESULT	THRESHOLD	ELECTION DATE
Los Angeles	Los Angeles	Avalon	General Tax	Transient Occupancy Tax: increase from 12% to 13%, for 10 years, generating an estimated \$500,000 per year	General Government	TT	46.5	53.5	Fail	Majority	6/7/2022
Los Angeles	Los Angeles	Manhattan Beach	General Tax	Parcel Tax: \$1,095 on each real property parcel, adjusted annually for inflation, for 12 years, generating \$11,000,000 to \$13,000,000 annually	K-12 School Programs	A	31.98	68.02	Fail	Majority	6/7/2022
Los Angeles	Los Angeles	Torrance	General Tax	Sales Tax: 0.5%, generating \$18,000,000 annually	General Government	SST	54.95	45.05	Pass	Majority	6/7/2022
Placer	Central Valley	North Lake Tahoe	General Tax	Transient Occupancy Tax: renew 2%, providing \$4,000,000 annually	Various City Services	A	89.97	10.03	Pass	Majority	6/7/2022
Santa Cruz	Other	Santa Cruz	General Tax	Sales Tax: additional 0.5% generating an estimated \$6,000,000 per year	General Government	F	49.85	50.15	Fail	Majority	6/7/2022
Santa Cruz	Other	Santa Cruz County	General Tax	Transient Occupancy Tax: 12% for hotels/motels/inns, and to 14% for vacation rental properties, providing approximately \$2,300,000 annually	General Government	B	69.23	30.77	Pass	Majority	6/7/2022
Santa Cruz	Other	Santa Cruz County	General Tax	Single-Use Cup Tax: \$0.125, raising approximately \$700,000 annually	General Government	C	69.64	30.36	Pass	Majority	6/7/2022
Alameda	Bay Area	Alameda Unified School District	GO Bond	\$298,000,000	K-12 School Facilities	B	56.33	43.67	Pass	55%	6/7/2022
Fresno	Central Valley	Westside Elementary School District	GO Bond	\$4,500,000	K-12 School Facilities	A	92.86	7.14	Pass	55%	6/7/2022
Imperial	San Diego/ Inland Empire	El Centro Elementary School District	GO Bond	\$37,800,000	K-12 School Programs/ Facilities	Y	56.72	43.28	Fail	Two-thirds	6/7/2022

TABLE C

SUMMARY OF LOCAL GOVERNMENT BOND AND TAX MEASURES BY TYPE OF TAX, 2022 LOCAL AND PRIMARY ELECTIONS

COUNTY	REGION	AGENCY	TYPE OF AX/DEBT	AMOUNT OF BOND/TAX	PURPOSE	MEASURE	% YES	% NO	RESULT	THRESHOLD	ELECTION DATE
Imperial	San Diego/ Inland Empire	Imperial Unified School District	GO Bond	\$50,000,000	K-12 School Facilities	A	50.41	49.59	Fail	55%	6/7/2022
Imperial	San Diego/ Inland Empire	Westmorland Union Elementary School District	GO Bond	\$3,750,000	K-12 School Facilities	W	56.09	43.91	Pass	55%	6/7/2022
Imperial	San Diego/ Inland Empire	Westmorland Union Elementary School District	GO Bond	\$3,750,000	K-12 School Facilities	Z	55.6	44.4	Pass	55%	6/7/2022
Kern / San Bernardino	Central Valley / San Diego/ Inland Empire	Muroc Joint Unified School District	GO Bond	\$21,000,000	K-12 School Facilities	B	60.81	39.19	Pass	55%	6/7/2022
Kern / San Bernardino	Central Valley / San Diego/ Inland Empire	Sierra Sands Unified School District	GO Bond	\$52,800,000	K-12 School Facilities	C	41.27	58.73	Fail	55%	6/7/2022
Los Angeles	Los Angeles	Antelope Valley Healthcare District	GO Bond	\$400,000,000	Hospital/Health Care Facilities	H	57.41	42.59	Fail	Two-thirds	6/7/2022
Los Angeles	Los Angeles	Little Lake City School District	GO Bond	\$36,000,000	K-12 School Facilities	LL	62.13	37.87	Pass	55%	6/7/2022
Madera	Central Valley	Chowchilla Union High School District	GO Bond	\$25,100,000	K-12 School Facilities	S	57.72	42.28	Pass	55%	6/7/2022
Marin	Bay Area	Mill Valley School District	GO Bond	\$194,000,000	K-12 School Facilities	G	68.39	31.61	Pass	55%	6/7/2022
Marin	Bay Area	San Rafael City Elementary School District	GO Bond	\$152,000,000	K-12 School Facilities	C	67.03	32.97	Pass	55%	6/7/2022
Marin	Bay Area	San Rafael City High School District	GO Bond	\$216,000,000	K-12 School Facilities	B	67.83	32.17	Pass	55%	6/7/2022
Mendocino	Other	Anderson Valley Unified School District	GO Bond	\$13,000,000	K-12 School Facilities	M	71.36	28.64	Pass	55%	6/7/2022
Merced	Central Valley	Merced River School District	GO Bond	\$3,500,000	K-12 School Facilities	T	24.83	75.17	Fail	55%	6/7/2022
Monterey	Other	San Lucas Union School District	GO Bond	\$3,600,000	K-12 School Facilities	C	59.46	40.54	Fail	Two-thirds	6/7/2022
Napa	Bay Area	St. Helena	GO Bond	\$19,150,000	Water Treatment	H	74.74	25.26	Pass	Two-thirds	6/7/2022
San Francisco	Bay Area	San Francisco	GO Bond	\$400,000,000	Public Transit	A	65.11	34.89	Fail	Two-thirds	6/7/2022
San Mateo	Bay Area	Hillsborough City School District	GO Bond	\$140,000,000	K-12 School Facilities	H	61.44	38.56	Pass	55%	6/7/2022
San Mateo	Bay Area	Jefferson Elementary School District	GO Bond	\$45,000,000	K-12 School Facilities	J	62.5	37.5	Pass	55%	6/7/2022

TABLE C

SUMMARY OF LOCAL GOVERNMENT BOND AND TAX MEASURES BY TYPE OF TAX, 2022 LOCAL AND PRIMARY ELECTIONS

COUNTY	REGION	AGENCY	TYPE OF AX/DEBT	AMOUNT OF BOND/TAX	PURPOSE	MEASURE	% YES	% NO	RESULT	THRESHOLD	ELECTION DATE
San Mateo	Bay Area	Millbrae Elementary School District	GO Bond	\$90,000,000	K-12 School Facilities	E	53.58	46.42	Fail	55%	6/7/2022
San Mateo	Bay Area	Ravenswood City School District	GO Bond	\$110,000,000	K-12 School Facilities	I	71.87	28.13	Pass	55%	6/7/2022
Santa Clara	Bay Area	Fremont Union High School District	GO Bond	\$275,000,000	K-12 School Facilities	G	55.71	44.29	Pass	55%	6/7/2022
Alameda	Bay Area	Oakland	Special Tax	Parcel Tax: \$114.50 per parcel for single-family residential units, \$78.22 per parcel for multi-unit residential property, and \$58.65 for non-residential units, thereby generating an estimated \$18 million per year	Public Libraries Services	C	82.36	17.64	Pass	Two-thirds	6/7/2022
Contra Costa	Bay Area	Contra Costa County	Special Tax	Abandoned Vehicle Abatement Fee: extend the \$1 annual fee per vehicle and an additional \$2 for certain commercial vehicles, estimated to generate \$1,100,000 annually, until April 30, 2032	Removal/Disposal of Abandoned/Wrecked Vehicles	G	67.38	32.62	Pass	Two-thirds	6/7/2022
Contra Costa	Bay Area	Martinez	Special Tax	Parcel Tax: \$79 annually for single-family parcels and at specified maximum rates for other parcel types, for 30 years, providing approximately \$1.2 million annually	Park and Recreation Facilities	F	68.77	31.23	Pass	Two-thirds	6/7/2022
El Dorado	Central Valley	Cascade Drainage Zone of Benefit 98393	Special Tax	Parcel Tax: \$350.00 on each parcel of real property within the boundaries of the Zone for 19 years, generating an annual revenue of \$12,950 each fiscal year	Street/Storm Drain Improvements	E	0	100	Fail	Two-thirds	6/7/2022

TABLE C

SUMMARY OF LOCAL GOVERNMENT BOND AND TAX MEASURES BY TYPE OF TAX, 2022 LOCAL AND PRIMARY ELECTIONS

COUNTY	REGION	AGENCY	TYPE OF AX/DEBT	AMOUNT OF BOND/TAX	PURPOSE	MEASURE	% YES	% NO	RESULT	THRESHOLD	ELECTION DATE
El Dorado	Central Valley	Fallen Leaf Lake Community Services District	Special Tax	Parcel Tax: \$660 per unit, subject to maximum inflation adjustment of 1.5% per year, established as: Unimproved 0.5 unit (currently \$320.46); improved 1.0 unit (currently \$640.94); SSA Sierra Programs LLC (40 units), annual revenue raised of \$205,416.40, for the next four years	Fire Services/ Emergency Medical Services	A	80.95	19.05	Pass	Two-thirds	6/7/2022
El Dorado	Central Valley	Knolls Property Owners Community Services District	Special Tax	Parcel Tax: \$300.00 per year to a maximum of \$600.00 per parcel per year (+CPI)	Street Improvements	B	55.56	44.44	Fail	Two-thirds	6/7/2022
El Dorado	Central Valley	Sundance Trail Zone of Benefit 98109	Special Tax	Parcel Tax: \$600 per parcel per year, adjusted each fiscal year by an amount not to exceed the cost of living using the California Construction Cost Index, up to a maximum rate of \$1,000 per parcel per year, commencing fiscal year 2023-2024	Street Improvements	C	73.21	26.79	Pass	Two-thirds	6/7/2022
Fresno	Central Valley	Fresno	Special Tax	Sales Tax: 1/10th of 1% sales tax for 15 years, providing approximately \$15,000,000 annually	Zoo Maintenance	Z	82.38	17.62	Pass	Two-thirds	6/7/2022
Humboldt	Other	Humboldt County	Special Tax	Transient Occupancy Tax: 12% generating approximately \$3,080,000 annually	General Government	J	63.9	36.1	Pass	Majority	6/7/2022

TABLE C

SUMMARY OF LOCAL GOVERNMENT BOND AND TAX MEASURES BY TYPE OF TAX, 2022 LOCAL AND PRIMARY ELECTIONS

COUNTY	REGION	AGENCY	TYPE OF AX/DEBT	AMOUNT OF BOND/TAX	PURPOSE	MEASURE	% YES	% NO	RESULT	THRESHOLD	ELECTION DATE
Humboldt	Other	Humboldt County	Special Tax	Abandoned Vehicle Abatement Fee: \$1 per vehicle and \$2 for certain commercial vehicles be adopted for ten years, generating \$160,000 annually	Removal/Disposal of Abandoned/Wrecked Vehicles	K	80.32	19.68	Pass	Two-thirds	6/7/2022
Marin	Bay Area	Kentfield Fire Protection District	Special Tax	Parcel Tax: \$94.50 per residential living unit or 1,500 square feet of developed nonresidential property, adjusted up to \$3 per year, for 4 years, generating an estimated \$265,500 annually	Paramedic/Emergency Medical Services	K	83.52	16.48	Pass	Two-thirds	6/7/2022
Marin	Bay Area	Larkspur	Special Tax	Parcel Tax: \$94.50 per residential living unit or 1,500 square feet of developed nonresidential property, adjusted up to \$3 per year, for 4 years, generating an estimated \$680,000 annually	Paramedic/Emergency Medical Services	H	81.9	18.1	Pass	Two-thirds	6/7/2022
Marin	Bay Area	Larkspur-Corte Madera School District	Special Tax	Parcel Tax: \$910 per parcel for 10 years, generating \$4,000,000 annually	K-12 School Programs	E	77.27	22.73	Pass	Two-thirds	6/7/2022
Marin	Bay Area	Marin County	Special Tax	Sales Tax: renew \$.25 tax, keeping tax rate at 8%, for 9 years, generating \$14,000,000 annually	Park and Recreation Facilities	A	74.73	25.27	Pass	Two-thirds	6/7/2022
Marin	Bay Area	Mesa Park Firehouse Community Park Agency	Special Tax	Parcel Tax: \$75 per year per improved parcel for a period of 4 years, raising approximately \$40,000 annually	Park and Recreation Facilities	M	83.47	16.53	Pass	Two-thirds	6/7/2022

TABLE C

SUMMARY OF LOCAL GOVERNMENT BOND AND TAX MEASURES BY TYPE OF TAX, 2022 LOCAL AND PRIMARY ELECTIONS

COUNTY	REGION	AGENCY	TYPE OF AX/DEBT	AMOUNT OF BOND/TAX	PURPOSE	MEASURE	% YES	% NO	RESULT	THRESHOLD	ELECTION DATE
Marin	Bay Area	Ross	Special Tax	Parcel Tax: \$94.50 per residential living unit or 1,500 square feet of developed nonresidential property, adjusted up to \$3 per year, for 4 years, generating approximately \$93,000 annually	Paramedic/Emergency Medical Services	I	87	13	Pass	Two-thirds	6/7/2022
Marin	Bay Area	San Anselmo	Special Tax	Parcel Tax: \$94.50 per residential living unit or 1,500 square feet of developed nonresidential property, adjusted up to \$3 per year, for 4 years, generating approximately \$560,000 annually	Paramedic/Emergency Medical Services	J	81.38	18.62	Pass	Two-thirds	6/7/2022
Marin	Bay Area	Sleepy Hollow Fire Protection District	Special Tax	Parcel Tax: \$94.50 in year one and increasing \$3 annually to a maximum of \$103.50 per taxable living unit, or per 1,500 square feet of structure in nonresidential use, for 4 years, generating approximately \$85,995.00 in year one	Paramedic/Emergency Medical Services	L	87.02	12.98	Pass	Two-thirds	6/7/2022
Mariposa	Other	Mariposa County	Special Tax	Sales Tax: 1% transaction and use tax for 40 years	Hospital/Health Care Facilities	O	69.62	30.38	Pass	Majority	6/7/2022
Napa	Bay Area	Napa County	Special Tax	Sales Tax: increase of \$0.25, from 7.75% to 8%, for 10 years, generating \$10,000,000 annually	Fire Protection	L	56.35	43.65	Fail	Two-thirds	6/7/2022
Nevada	Other	Truckee	Special Tax	Sales Tax: renew and increase to .5%, providing \$3,000,000 annually	Park and Recreation Facilities	U	79.56	20.44	Pass	Two-thirds	6/7/2022

TABLE C

SUMMARY OF LOCAL GOVERNMENT BOND AND TAX MEASURES BY TYPE OF TAX, 2022 LOCAL AND PRIMARY ELECTIONS

COUNTY	REGION	AGENCY	TYPE OF AX/DEBT	AMOUNT OF BOND/TAX	PURPOSE	MEASURE	% YES	% NO	RESULT	THRESHOLD	ELECTION DATE
Orange	Los Angeles	Huntington Beach	Special Tax	Cannabis Tax: 6% on the gross receipts of cannabis retailers and 1% on other cannabis businesses	Police Services/ Behavioral Health/Homeless Prevention	A	64.58	35.42	Fail	Two-thirds	6/7/2022
Sacramento	Central Valley	River Delta Fire District	Special Tax	Parcel Tax: annual \$90 per residential unit, raising approximately \$130,000 per year	Fire Protection/ Emergency Medical Services	H	72.08	27.92	Pass	Two-thirds	6/7/2022
Sacramento	Central Valley	Sacramento	Special Tax	Vehicle Abatement Program Fee: \$1.00 per vehicle and an additional \$2.00 for certain commercial vehicles, for 10 years	Removal/Disposal of Abandoned/ Wrecked Vehicles	C	57.68	42.32	Fail	Two-thirds	6/7/2022
San Bernardino	San Diego/ Inland Empire	San Bernardino County Fire Protection District	Special Tax	Parcel Tax: repeal the special \$117 parcel tax associated with Fire Protection Services Zone Five	Fire Protection	Z	58.43	41.57	Pass	Majority	6/7/2022
San Luis Obispo	Other	Oceano Community Services District	Special Tax	Parcel Tax: annual \$180.00 per parcel, providing \$410,760 a year, subject to annual maximum increases capped at 2%	Fire Services/ Emergency Medical Services	A-22	57.75	42.25	Fail	Two-thirds	6/7/2022
San Mateo	Bay Area	Belmont-Redwood Shores School District	Special Tax	Parcel Tax: renew \$292 annual tax providing \$3,500,000 annually for ten years	K-12 School Programs	C	75.05	24.95	Pass	Two-thirds	6/7/2022
San Mateo	Bay Area	Brisbane School District	Special Tax	Parcel Tax: \$131 per year, for six years, commencing July 1, 2022, estimated at \$450,000 annually	K-12 School Teacher Recruitment	G	73.23	26.77	Pass	Two-thirds	6/7/2022
Santa Clara	Bay Area	Alum Rock Union School District	Special Tax	Parcel Tax: renew \$214.10 for 7 years, adjusted annually, providing \$4,500,000 yearly	K-12 School Programs/Teacher Recruitment	I	69.42	30.58	Pass	Two-thirds	6/7/2022

TABLE C

SUMMARY OF LOCAL GOVERNMENT BOND AND TAX MEASURES BY TYPE OF TAX, 2022 LOCAL AND PRIMARY ELECTIONS

COUNTY	REGION	AGENCY	TYPE OF AX/DEBT	AMOUNT OF BOND/TAX	PURPOSE	MEASURE	% YES	% NO	RESULT	THRESHOLD	ELECTION DATE
Santa Clara	Bay Area	Milpitas Unified School District	Special Tax	Parcel Tax: renew annual \$84 for eight years, providing \$1,600,000 annually	K-12 School Programs	E	74.55	25.45	Pass	Two-thirds	6/7/2022
Santa Clara	Bay Area	Mount Pleasant School District	Special Tax	Parcel Tax: renew annual \$95 for seven years, raising \$480,000 annually	K-12 School Programs	H	68.54	31.46	Pass	Two-thirds	6/7/2022
Sonoma	Bay Area	Kenwood School District	Special Tax	Parcel Tax: renew annual \$52, raising approximately \$110,000 per year	K-12 School Programs/Teacher Recruitment	A	81.12	18.88	Pass	Two-thirds	6/7/2022
Tulare	Central Valley	Exeter Public Cemetery District	Special Tax	Parcel Tax: \$35.00 per parcel on each parcel of taxable real property within the district, beginning as of July 1, 2022	Cemetery Improvements	U	61.59	38.41	Fail	Two-thirds	6/7/2022
Tuolumne	Other	Tuolumne South County Ambulance Zone	Special Tax	Parcel Tax: annual \$90 per improved commercial parcel and \$90.00 per dwelling for residential parcels, providing \$340,650 annually, and expiring on June 30, 2028	Emergency Medical Services	W	77.91	22.09	Pass	Two-thirds	6/7/2022

Appendix D: Summary of Local Government Bond and Tax Measures by Purpose

TABLE D

SUMMARY OF LOCAL GOVERNMENT BOND AND TAX MEASURES BY PURPOSE, 2022 LOCAL AND PRIMARY ELECTIONS

COUNTY	REGION	AGENCY	TYPE OF TAX/DEBT	AMOUNT OF BOND/TAX	PURPOSE	MEASURE	% YES	% NO	RESULT	THRESHOLD	ELECTION DATE
LOCAL ELECTION											
Plumas	Other	Peninsula Fire Protection District	Special Tax	Parcel Tax: \$442.50 (Improved) \$394.50 (unimproved) per year per parcel, replacing the current special tax of \$292.50 (Improved) \$277.50 (unimproved) per year per parcel	Fire Protection/ Emergency Medical Services	A	74.67	25.33	Pass	Two-thirds	5/3/2022
Monterey	Other	Pacific Grove	General Tax	Sales Tax: increase from 1% to 1.5% transactions and use tax, generating an estimated \$1.1 million annually	General Government	A	60.05	39.95	Pass	Majority	4/12/2022
Alameda / Contra Costa	Bay Area	Livermore Valley Joint Unified School District	Special Tax	Parcel Tax: extend the existing \$138 parcel tax for seven years, from July 1, 2022, to July 1, 2029, providing approximately \$4,000,000 annually	K-12 School Programs	A	67.24	32.76	Pass	Two-thirds	5/3/2022
Marin	Bay Area	Paradise Ranch Estates Permanent Road Division	Special Tax	Parcel Tax: \$968 per parcel for 10 years, and then \$125 per parcel for the following 15 years	Street Improvements	R	90.15	9.85	Pass	Two-thirds	4/12/2022
PRIMARY ELECTION											
Tulare	Central Valley	Exeter Public Cemetery District	Special Tax	Parcel Tax: \$35.00 per parcel on each parcel of taxable real property within the district, beginning as of July 1, 2022	Cemetery Improvements	U	61.59	38.41	Fail	Two-thirds	6/7/2022
Tuolumne	Other	Tuolumne South County Ambulance Zone	Special Tax	Parcel Tax: annual \$90 per improved commercial parcel and \$90.00 per dwelling for residential parcels, providing \$340,650 annually, and expiring on June 30, 2028	Emergency Medical Services	W	77.91	22.09	Pass	Two-thirds	6/7/2022

TABLE D

SUMMARY OF LOCAL GOVERNMENT BOND AND TAX MEASURES BY PURPOSE, 2022 LOCAL AND PRIMARY ELECTIONS

COUNTY	REGION	AGENCY	TYPE OF TAX/DEBT	AMOUNT OF BOND/TAX	PURPOSE	MEASURE	% YES	% NO	RESULT	THRESHOLD	ELECTION DATE
Napa	Bay Area	Napa County	Special Tax	Sales Tax: increase of \$0.25, from 7.75% to 8%, for 10 years, generating \$10,000,000 annually	Fire Protection	L	56.35	43.65	Fail	Two-thirds	6/7/2022
San Bernardino	San Diego/ Inland Empire	San Bernardino County Fire Protection District	Special Tax	Parcel Tax: repeal the special \$117 parcel tax associated with Fire Protection Services Zone Five	Fire Protection	Z	58.43	41.57	Pass	Majority	6/7/2022
Sacramento	Central Valley	River Delta Fire District	Special Tax	Parcel Tax: annual \$90 per residential unit, raising approximately \$130,000 per year	Fire Protection/ Emergency Medical Services	H	72.08	27.92	Pass	Two-thirds	6/7/2022
El Dorado	Central Valley	Fallen Leaf Lake Community Services District	Special Tax	Parcel Tax: \$660 per unit, subject to maximum inflation adjustment of 1.5% per year, established as: Unimproved 0.5 unit (currently \$320.46); improved 1.0 unit (currently \$640.94); SSA Sierra Programs LLC (40 units), annual revenue raised of \$205,416.40, for the next four years	Fire Services/ Emergency Medical Services	A	80.95	19.05	Pass	Two-thirds	6/7/2022
Kings	Central Valley	Kings County	General Tax	Sales Tax: additional 0.5%, from 0.25% to 0.75%, generating an estimated \$11,700,000 per year	Fire Services/ Emergency Medical Services	F	35.73	64.27	Fail	Majority	6/7/2022
San Luis Obispo	Other	Oceano Community Services District	Special Tax	Parcel Tax: annual \$180.00 per parcel, providing \$410,760 a year, subject to annual maximum increases capped at 2%	Fire Services/ Emergency Medical Services	A-22	57.75	42.25	Fail	Two-thirds	6/7/2022
Humboldt	Other	Humboldt County	Special Tax	Transient Occupancy Tax: 12% generating approximately \$3,080,000 annually	General Government	J	63.9	36.1	Pass	Majority	6/7/2022

TABLE D

SUMMARY OF LOCAL GOVERNMENT BOND AND TAX MEASURES BY PURPOSE, 2022 LOCAL AND PRIMARY ELECTIONS

COUNTY	REGION	AGENCY	TYPE OF TAX/DEBT	AMOUNT OF BOND/TAX	PURPOSE	MEASURE	% YES	% NO	RESULT	THRESHOLD	ELECTION DATE
Lassen	Other	Susanville	General Tax	Sales Tax: \$0.01 estimated to generate \$1,750,000 annually	General Government	P	54.7	45.3	Pass	Majority	Majority
Los Angeles	Los Angeles	Avalon	General Tax	Sales Tax: additional 0.25%, from 10% to 10.25%, generating approximately \$250,000 annually	General Government	S	34.03	65.97	Fail	Majority	6/7/2022
Los Angeles	Los Angeles	Avalon	General Tax	Transient Occupancy Tax: increase from 12% to 13%, for 10 years, generating an estimated \$500,000 per year	General Government	TT	46.5	53.5	Fail	Majority	6/7/2022
Los Angeles	Los Angeles	Torrance	General Tax	Sales Tax: 0.5%, generating \$18,000,000 annually	General Government	SST	54.95	45.05	Pass	Majority	6/7/2022
Santa Cruz	Other	Santa Cruz	General Tax	Sales Tax: additional 0.5% generating an estimated \$6,000,000 per year	General Government	F	49.85	50.15	Fail	Majority	6/7/2022
Santa Cruz	Other	Santa Cruz County	General Tax	Transient Occupancy Tax: 12% for hotels/motels/inns, and to 14% for vacation rental properties, providing approximately \$2,300,000 annually	General Government	B	69.23	30.77	Pass	Majority	6/7/2022
Santa Cruz	Other	Santa Cruz County	General Tax	Single-Use Cup Tax: \$0.125, raising approximately \$700,000 annually	General Government	C	69.64	30.36	Pass	Majority	6/7/2022
Los Angeles	Los Angeles	Antelope Valley Healthcare District	GO Bond	\$400,000,000	Hospital/Health Care Facilities	H	57.41	42.59	Fail	Two-thirds	6/7/2022
Mariposa	Other	Mariposa County	Special Tax	Sales Tax: 1% transaction and use tax for 40 years	Hospital/Health Care Facilities	O	69.62	30.38	Pass	Majority	6/7/2022
Alameda	Bay Area	Alameda Unified School District	GO Bond	\$298,000,000	K-12 School Facilities	B	56.33	43.67	Pass	55%	6/7/2022

TABLE D

SUMMARY OF LOCAL GOVERNMENT BOND AND TAX MEASURES BY PURPOSE, 2022 LOCAL AND PRIMARY ELECTIONS

COUNTY	REGION	AGENCY	TYPE OF TAX/DEBT	AMOUNT OF BOND/TAX	PURPOSE	MEASURE	% YES	% NO	RESULT	THRESHOLD	ELECTION DATE
Fresno	Central Valley	Westside Elementary School District	GO Bond	\$4,500,000	K-12 School Facilities	A	92.86	7.14	Pass	55%	6/7/2022
Imperial	San Diego/ Inland Empire	Imperial Unified School District	GO Bond	\$50,000,000	K-12 School Facilities	A	50.41	49.59	Fail	55%	6/7/2022
Imperial	San Diego/ Inland Empire	Westmorland Union Elementary School District	GO Bond	\$3,750,000	K-12 School Facilities	W	56.09	43.91	Pass	55%	6/7/2022
Imperial	San Diego/ Inland Empire	Westmorland Union Elementary School District	GO Bond	\$3,750,000	K-12 School Facilities	Z	55.6	44.4	Pass	55%	6/7/2022
Kern / San Bernardino	Central Valley / San Diego/ Inland Empire	Muroc Joint Unified School District	GO Bond	\$21,000,000	K-12 School Facilities	B	60.81	39.19	Pass	55%	6/7/2022
Kern / San Bernardino	Central Valley / San Diego/ Inland Empire	Sierra Sands Unified School District	GO Bond	\$52,800,000	K-12 School Facilities	C	41.27	58.73	Fail	55%	6/7/2022
Los Angeles	Los Angeles	Little Lake City School District	GO Bond	\$36,000,000	K-12 School Facilities	LL	62.13	37.87	Pass	55%	6/7/2022
Madera	Central Valley	Chowchilla Union High School District	GO Bond	\$25,100,000	K-12 School Facilities	S	57.72	42.28	Pass	55%	6/7/2022
Marin	Bay Area	Mill Valley School District	GO Bond	\$194,000,000	K-12 School Facilities	G	68.39	31.61	Pass	55%	6/7/2022
Marin	Bay Area	San Rafael City Elementary School District	GO Bond	\$152,000,000	K-12 School Facilities	C	67.03	32.97	Pass	55%	6/7/2022
Marin	Bay Area	San Rafael City High School District	GO Bond	\$216,000,000	K-12 School Facilities	B	67.83	32.17	Pass	55%	6/7/2022
Mendocino	Other	Anderson Valley Unified School District	GO Bond	\$13,000,000	K-12 School Facilities	M	71.36	28.64	Pass	55%	6/7/2022
Merced	Central Valley	Merced River School District	GO Bond	\$3,500,000	K-12 School Facilities	T	24.83	75.17	Fail	55%	6/7/2022
Monterey	Other	San Lucas Union School District	GO Bond	\$3,600,000	K-12 School Facilities	C	59.46	40.54	Fail	Two-thirds	6/7/2022
San Mateo	Bay Area	Hillsborough City School District	GO Bond	\$140,000,000	K-12 School Facilities	H	61.44	38.56	Pass	55%	6/7/2022
San Mateo	Bay Area	Jefferson Elementary School District	GO Bond	\$45,000,000	K-12 School Facilities	J	62.5	37.5	Pass	55%	6/7/2022

TABLE D

SUMMARY OF LOCAL GOVERNMENT BOND AND TAX MEASURES BY PURPOSE, 2022 LOCAL AND PRIMARY ELECTIONS

COUNTY	REGION	AGENCY	TYPE OF TAX/DEBT	AMOUNT OF BOND/TAX	PURPOSE	MEASURE	% YES	% NO	RESULT	THRESHOLD	ELECTION DATE
San Mateo	Bay Area	Millbrae Elementary School District	GO Bond	\$90,000,000	K-12 School Facilities	E	53.58	46.42	Fail	55%	6/7/2022
San Mateo	Bay Area	Ravenswood City School District	GO Bond	\$110,000,000	K-12 School Facilities	I	71.87	28.13	Pass	55%	6/7/2022
Santa Clara	Bay Area	Fremont Union High School District	GO Bond	\$275,000,000	K-12 School Facilities	G	55.71	44.29	Pass	55%	6/7/2022
Los Angeles	Los Angeles	Manhattan Beach	General Tax	Parcel Tax: \$1,095 on each real property parcel, adjusted annually for inflation, for 12 years, generating \$11,000,000 to \$13,000,000 annually	K-12 School Programs	A	31.98	68.02	Fail	Majority	6/7/2022
Marin	Bay Area	Larkspur-Corte Madera School District	Special Tax	Parcel Tax: \$910 per parcel for 10 years, generating \$4,000,000 annually	K-12 School Programs	E	77.27	22.73	Pass	Two-thirds	6/7/2022
San Mateo	Bay Area	Belmont-Redwood Shores School District	Special Tax	Parcel Tax: renew \$292 annual tax providing \$3,500,000 annually for ten years	K-12 School Programs	C	75.05	24.95	Pass	Two-thirds	6/7/2022
Santa Clara	Bay Area	Milpitas Unified School District	Special Tax	Parcel Tax: renew annual \$84 for eight years, providing \$1,600,000 annually	K-12 School Programs	E	74.55	25.45	Pass	Two-thirds	6/7/2022
Santa Clara	Bay Area	Mount Pleasant School District	Special Tax	Parcel Tax: renew annual \$95 for seven years, raising \$480,000 annually	K-12 School Programs	H	68.54	31.46	Pass	Two-thirds	6/7/2022
Imperial	San Diego/ Inland Empire	El Centro Elementary School District	GO Bond	\$37,800,000	K-12 School Programs/Facilities	Y	56.72	43.28	Fail	Two-thirds	6/7/2022
Santa Clara	Bay Area	Alum Rock Union School District	Special Tax	Parcel Tax: renew \$214.10 for 7 years, adjusted annually, providing \$4,500,000 yearly	K-12 School Programs/Teacher Recruitment	I	69.42	30.58	Pass	Two-thirds	6/7/2022
Sonoma	Bay Area	Kenwood School District	Special Tax	Parcel Tax: renew annual \$52, raising approximately \$110,000 per year	K-12 School Programs/Teacher Recruitment	A	81.12	18.88	Pass	Two-thirds	6/7/2022

TABLE D

SUMMARY OF LOCAL GOVERNMENT BOND AND TAX MEASURES BY PURPOSE, 2022 LOCAL AND PRIMARY ELECTIONS

COUNTY	REGION	AGENCY	TYPE OF TAX/DEBT	AMOUNT OF BOND/TAX	PURPOSE	MEASURE	% YES	% NO	RESULT	THRESHOLD	ELECTION DATE
San Mateo	Bay Area	Brisbane School District	Special Tax	Parcel Tax: \$131 per year, for six years, commencing July 1, 2022, estimated at \$450,000 annually	K-12 School Teacher Recruitment	G	73.23	26.77	Pass	Two-thirds	6/7/2022
Marin	Bay Area	Kentfield Fire Protection District	Special Tax	Parcel Tax: \$94.50 per residential living unit or 1,500 square feet of developed nonresidential property, adjusted up to \$3 per year, for 4 years, generating an estimated \$265,500 annually	Paramedic/ Emergency Medical Services	K	83.52	16.48	Pass	Two-thirds	6/7/2022
Marin	Bay Area	Larkspur	Special Tax	Parcel Tax: \$94.50 per residential living unit or 1,500 square feet of developed nonresidential property, adjusted up to \$3 per year, for 4 years, generating an estimated \$680,000 annually	Paramedic/ Emergency Medical Services	H	81.9	18.1	Pass	Two-thirds	6/7/2022
Marin	Bay Area	Ross	Special Tax	Parcel Tax: \$94.50 per residential living unit or 1,500 square feet of developed nonresidential property, adjusted up to \$3 per year, for 4 years, generating approximately \$93,000 annually	Paramedic/ Emergency Medical Services	I	87	13	Pass	Two-thirds	6/7/2022
Marin	Bay Area	San Anselmo	Special Tax	Parcel Tax: \$94.50 per residential living unit or 1,500 square feet of developed nonresidential property, adjusted up to \$3 per year, for 4 years, generating approximately \$560,000 annually	Paramedic/ Emergency Medical Services	J	81.38	18.62	Pass	Two-thirds	6/7/2022

TABLE D

SUMMARY OF LOCAL GOVERNMENT BOND AND TAX MEASURES BY PURPOSE, 2022 LOCAL AND PRIMARY ELECTIONS

COUNTY	REGION	AGENCY	TYPE OF TAX/DEBT	AMOUNT OF BOND/TAX	PURPOSE	MEASURE	% YES	% NO	RESULT	THRESHOLD	ELECTION DATE
Marin	Bay Area	Sleepy Hollow Fire Protection District	Special Tax	Parcel Tax: \$94.50 in year one and increasing \$3 annually to a maximum of \$103.50 per taxable living unit, or per 1,500 square feet of structure in nonresidential use, for 4 years, generating approximately \$85,995.00 in year one	Paramedic/ Emergency Medical Services	L	87.02	12.98	Pass	Two-thirds	6/7/2022
Contra Costa	Bay Area	Martinez	Special Tax	Parcel Tax: \$79 annually for single-family parcels and at specified maximum rates for other parcel types, for 30 years, providing approximately \$1.2 million annually	Park and Recreation Facilities	F	68.77	31.23	Pass	Two-thirds	6/7/2022
Marin	Bay Area	Marin County	Special Tax	Sales Tax: renew \$.25 tax, keeping tax rate at 8%, for 9 years, generating \$14,000,000 annually	Park and Recreation Facilities	A	74.73	25.27	Pass	Two-thirds	6/7/2022
Marin	Bay Area	Mesa Park Firehouse Community Park Agency	Special Tax	Parcel Tax: \$75 per year per improved parcel for a period of 4 years, raising approximately \$40,000 annually	Park and Recreation Facilities	M	83.47	16.53	Pass	Two-thirds	6/7/2022
Nevada	Other	Truckee	Special Tax	Sales Tax: renew and increase to .5%, providing \$3,000,000 annually	Park and Recreation Facilities	U	79.56	20.44	Pass	Two-thirds	6/7/2022
Orange	Los Angeles	Huntington Beach	Special Tax	Cannabis Tax: 6% on the gross receipts of cannabis retailers and 1% on other cannabis businesses	Police Services/ Behavioral Health/Homeless Prevention	A	64.58	35.42	Fail	Two-thirds	6/7/2022

TABLE D

SUMMARY OF LOCAL GOVERNMENT BOND AND TAX MEASURES BY PURPOSE, 2022 LOCAL AND PRIMARY ELECTIONS

COUNTY	REGION	AGENCY	TYPE OF TAX/DEBT	AMOUNT OF BOND/TAX	PURPOSE	MEASURE	% YES	% NO	RESULT	THRESHOLD	ELECTION DATE
Alameda	Bay Area	Oakland	Special Tax	Parcel Tax: \$114.50 per parcel for single-family residential units, \$78.22 per parcel for multi-unit residential property, and \$58.65 for non-residential units, thereby generating an estimated \$18 million per year	Public Libraries Services	C	82.36	17.64	Pass	Two-thirds	6/7/2022
San Francisco	Bay Area	San Francisco	GO Bond	\$400,000,000	Public Transit	A	65.11	34.89	Fail	Two-thirds	6/7/2022
Contra Costa	Bay Area	Contra Costa County	Special Tax	Abandoned Vehicle Abatement Fee: extend the \$1 annual fee per vehicle and an additional \$2 for certain commercial vehicles, estimated to generate \$1,100,000 annually, until April 30, 2032	Removal/Disposal of Abandoned/Wrecked Vehicles	G	67.38	32.62	Pass	Two-thirds	6/7/2022
Humboldt	Other	Humboldt County	Special Tax	Abandoned Vehicle Abatement Fee: \$1 per vehicle and \$2 for certain commercial vehicles be adopted for ten years, generating \$160,000 annually	Removal/Disposal of Abandoned/Wrecked Vehicles	K	80.32	19.68	Pass	Two-thirds	6/7/2022
Sacramento	Central Valley	Sacramento	Special Tax	Vehicle Abatement Program Fee: \$1.00 per vehicle and an additional \$2.00 for certain commercial vehicles, for 10 years	Removal/Disposal of Abandoned/Wrecked Vehicles	C	57.68	42.32	Fail	Two-thirds	6/7/2022
El Dorado	Central Valley	Knolls Property Owners Community Services District	Special Tax	Parcel Tax: \$300.00 per year to a maximum of \$600.00 per parcel per year (+CPI)	Street Improvements	B	55.56	44.44	Fail	Two-thirds	6/7/2022

TABLE D

SUMMARY OF LOCAL GOVERNMENT BOND AND TAX MEASURES BY PURPOSE, 2022 LOCAL AND PRIMARY ELECTIONS

COUNTY	REGION	AGENCY	TYPE OF TAX/DEBT	AMOUNT OF BOND/TAX	PURPOSE	MEASURE	% YES	% NO	RESULT	THRESHOLD	ELECTION DATE
El Dorado	Central Valley	Sundance Trail Zone of Benefit 98109	Special Tax	Parcel Tax: \$600 per parcel per year, adjusted each fiscal year by an amount not to exceed the cost of living using the California Construction Cost Index, up to a maximum rate of \$1,000 per parcel per year, commencing fiscal year 2023-2024	Street Improvements	C	73.21	26.79	Pass	Two-thirds	6/7/2022
El Dorado	Central Valley	Cascade Drainage Zone of Benefit 98393	Special Tax	Parcel Tax: \$350.00 on each parcel of real property within the boundaries of the Zone for 19 years, generating an annual revenue of \$12,950 each fiscal year	Street/Storm Drain Improvements	E	0	100	Fail	Two-thirds	6/7/2022
Placer	Central Valley	North Lake Tahoe	General Tax	Transient Occupancy Tax: renew 2%, providing \$4,000,000 annually	Various City Services	A	89.97	10.03	Pass	Majority	6/7/2022
Napa	Bay Area	St. Helena	GO Bond	\$19,150,000	Water Treatment	H	74.74	25.26	Pass	Two-thirds	6/7/2022
Fresno	Central Valley	Fresno	Special Tax	Sales Tax: 1/10th of 1% sales tax for 15 years, providing approximately \$15,000,000 annually	Zoo Maintenance	Z	82.38	17.62	Pass	Two-thirds	6/7/2022



**CALIFORNIA DEBT AND INVESTMENT
ADVISORY COMMISSION**

915 Capitol Mall, Room 400, Sacramento, CA 95814
p 916.653.3269 • f 916.654.7440
cdiac@treasurer.ca.gov
www.treasurer.ca.gov/cdiac